

Director's Statement

The aim of the Joanna Briggs Institute for Evidence Based Nursing and Midwifery (JBIEBNM) is to improve the effectiveness of nursing and midwifery practice and in turn achieve improved health care outcomes. The activities detailed in the annual report for 2000/2001 are designed to achieve these aims. Each activity is linked to others in a concerted strategy.

Evidence Based Research

The process begins with establishing the best available evidence. Systematic Reviews are conducted by JBIEBNM and the focus of these reviews is determined by the needs of the membership. Additional research activities are conducted to examine the processes that are evidence based practice.

Dissemination of the Evidence

Once highlighted the evidence must be disseminated to those that conduct health care. A range of strategies are employed as no one method will meet the access needs of all those who would use the information. JBIEBNM information is disseminated in a variety of print and electronic forms in both a broad and targeted fashion.

Implementation of the Evidence

To simply be exposed to information is not enough to create change. The users of evidence based research require support in developing systems to achieve sustained change in clinical practice. JBIEBNM works directly with health care providers through corporate membership to achieve the aims of the evidence based approach.

The structure of this annual report reflects the nature of evidence based health care and therefore activities are grouped under the headings of research, dissemination and implementation. All the JBIEBNM activities are conducted in partnership between collaborating centres, members of the institute and individuals determined to further the evidence based approach. The annual report is therefore evidence of the achievements of the entire collaboration in meeting the aims of The Joanna Briggs Institute for Evidence Based Nursing and Midwifery.

Chairman's Statement

The Joanna Briggs Institute for Evidence Based Nursing and Midwifery (JBIEBNM) is now in its fifth year of operation. The year 2000/2001 has been one of considerable expansion in a number of areas. This is perhaps indicative of the increasing acceptance that health care should be based on the best available evidence of effectiveness. As a result there has been a significant increase in membership in both the corporate and individual sectors. JBIEBNM at June 2001 was providing services to 270 corporate members and 170 individuals.

Naturally the membership represents a diverse range of organisations involved in either directly providing or supporting the provision of health care. These organisations vary considerably in size from remote area hospitals with as few as 4 beds to metropolitan hospitals with in excess of 1200 beds. Focus of care covers the spectrum from general acute care, to residential aged care and community based health care. The membership is culturally diverse with an increasingly global representation. Meeting the specific needs of this diverse group is a constant challenge for the Collaborating Centres of JBIEBNM. In order to meet this challenge a number of initiatives have been put in place over the last year.

The aged care sector has received a significant boost with the establishment of the Australian Centre for Evidence Based Residential Aged Care. Professor Alan Pearson of LaTrobe University heads this Centre based at the Bundoora Extended Care Centre. As the Founding Director of the JBIEBNM Collaboration Professor Pearson's experience means that the Centre has very quickly developed to meet the needs of the residential aged care sector.

The other major initiative to come to fruition in the last year is the establishment of the New South Wales Centre for Evidence Based Nursing and Midwifery. The State and National Centres provide an important focal point for corporate and individual members. For some time members in New South Wales have not had this focus and Professor Rhonda Griffiths and her team are therefore a very welcome addition to the collaboration. They come to JBIEBNM with an established reputation in all facets of evidence based practice. The success of these initiatives as with all activities of JBIEBNM is reliant on the continued support of the members of the Institute. The increase in support seen in the last year provides strong evidence that this success will continue in the future.



Dr Leslye Long

Chair of the Board of Management

Board

The Joanna Briggs Institute for Evidence Based Nursing and Midwifery (JBIEBNM) is governed by a Board of Management appointed by, and accountable to, Royal Adelaide Hospital.

Board membership as at 30 June 2001 was as follows:

Dr Leslye Long

Director of Nursing and Patient Care Services, Royal Adelaide Hospital (Chair)

Associate Professor Kaye Challenger

Chief Executive Officer, Royal Adelaide Hospital

Ms Rosemary Bryant

Executive Director, Royal College of Nursing, Australia

Mr Rick Wiechula

Acting Director, The Joanna Briggs Institute for Evidence Based Nursing and Midwifery

Dr Mary FitzGerald

Acting Head of Department, Department of Clinical Nursing, Adelaide University

Ms Debra Pratt

Principal Nursing Advisor, South Australian Department of Human Services

Professor Derek Frewin

Executive Dean, Faculty of Health Sciences and Dean of Medicine, Adelaide University

Ms Lee Thomas

Australian Nursing Federation

Professor Brendon Kearney

Executive Director, Statewide, Department of Human Services

Structure

Organisation

The Joanna Briggs Institute for Evidence Based Nursing and Midwifery (JBIEBNM) is an international research network with headquarters in Adelaide, South Australia.

JBIEBNM operations are a collaboration of individual country or state based Centres for Evidence Based Nursing and Midwifery, with the Adelaide office serving as the state centre for South Australia.

The Aged Care Centre joined The Joanna Briggs Institute collaboration in 2001. This is the first specialist centre, catering specifically to promoting evidence based health care within residential aged care facilities.

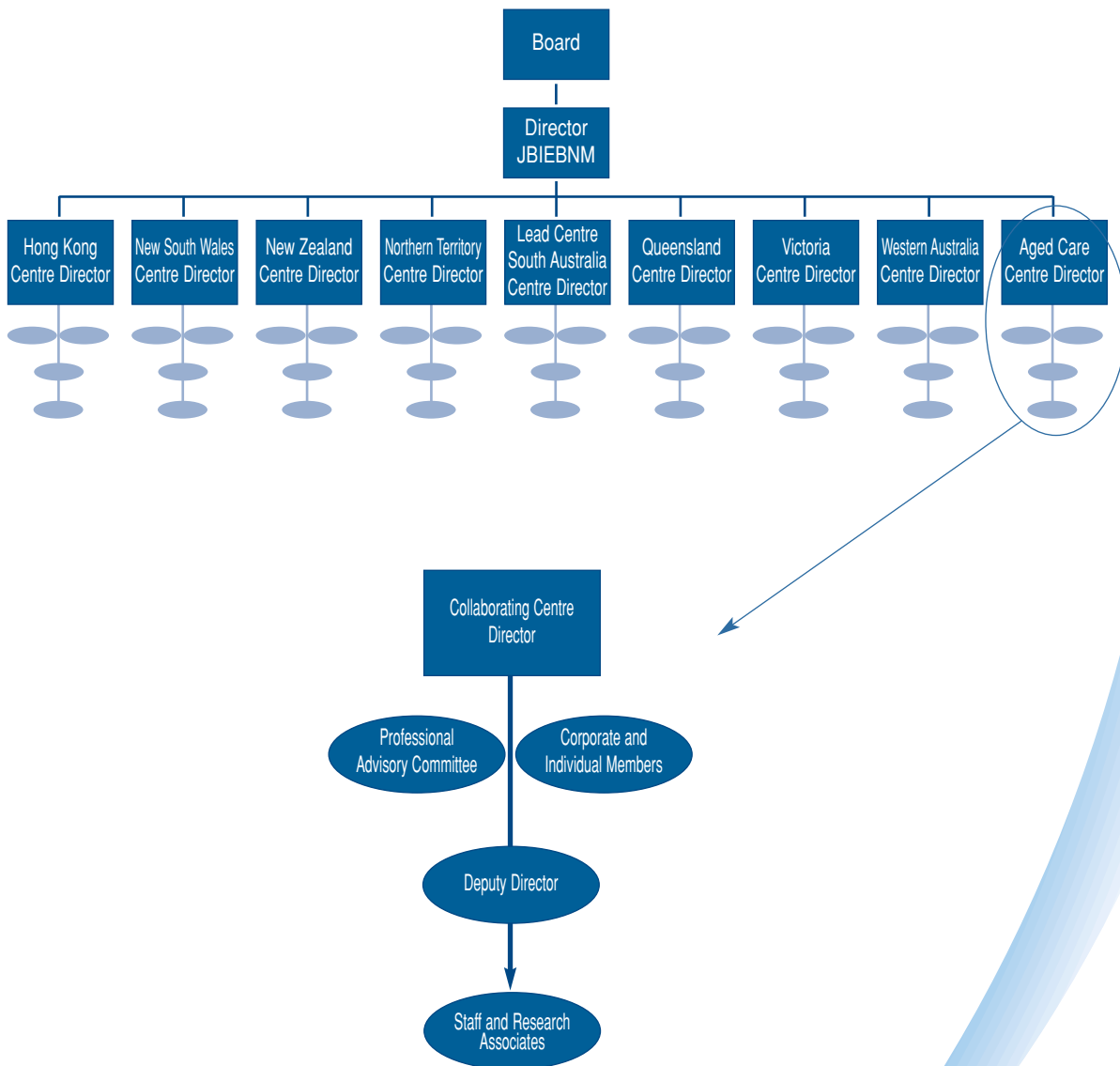
Training, consulting and research activities are managed by the collaborating centres, with the Adelaide office acting as the coordinating headquarters.

To facilitate strategic planning and coordination of the Institute's activities, Directors from all the collaborating centres meet biannually with Lead Centre staff. In the last year the Centre Directors' meetings were held in November 2000 and April 2001.

Corporately, the JBIEBNM Lead Centre has coordinated symposia aimed at ensuring the ongoing quality of all JBIEBNM systematic reviews and evaluation cycles. Two symposia have been held in Adelaide in 2000/2001, with Centre Directors and affiliates attending from other state and overseas centres to discuss issues related to systematic review methodologies, development of recommendations, and methods of evaluation.

Management

The Joanna Briggs Institute for Evidence Based Nursing and Midwifery (JBIEBNM) is controlled by the Board of Management. The Director manages daily operations of the collaboration and operations of the collaborating centres are managed by their Centre Directors.



Membership

Corporate Membership

The following list details the organisations that were corporate members as at 30 June 2001.

As members of The Joanna Briggs Institute, these organisations have made a commitment to evidence based health care, receiving information, examining their practice and implementing appropriate changes in their setting. The level of evidence based health care information provided and disseminated by The Joanna Briggs Institute is made possible by the support of these members.

The following organisations have been grouped by state or country as appropriate.

Australian Capital Territory

Calvary Hospital

Canberra Hospital Library

John James Memorial Hospital

Mayne Health:

National Capital Private Hospital

Australia Wide

Australian College of Midwives

Hong Kong

Chinese University of Hong Kong - CENTRE

Institute of Advanced Nursing Studies

New Zealand

Ascot Hospital

Ashburton & Community Health Services

Auckland Healthcare - CENTRE

Bay of Plenty District Health Board

Membership

Bowen Hospital Ltd

Burwood Hospital

Capital and Coast Health Library

Healthcare Otago

Healthlink South Pty Ltd

Howick Baptist Healthcare

Lakeland Health

Manukau Institute of Technology Library

Mercy Hospital

Northbridge Hospital

Presbyterian Support Services

Private Life Care

South Auckland Health

UNITEC

Waitemata Health

New South Wales

Albury Wodonga Private Hospital

Aust Catholic University

Bulli District Hospital

Calvary Hospital Wagga Wagga Inc

Community of Lithgow Integrated Health Facility

Greater Murray Area Health Service Library

Health Support Battalion

Hope Healthcare

Lewisham Aged Care

Liverpool Hospital - CENTRE

Lottie Stewart Hospital

Mayne Health:

Armidale Private Hospital

Castlecrag Private Hospital

Christo Road Private Hospital

Dudley Private Hospital

Kareena Private Hospital

Lindgard Private Hospital

Macarthur Private Hospital

Mosman Private Hospital

Nepean Private Hospital

North Gosford Private Hospital

Nowra Community Hospital

Port Macquarie Base Hospital

Port Macquarie Private Hospital

Prince of Wales Hospital

St George Private Hospital & Medical Centre

Strathfield Private Hospital

The Hills Private Hospital

Warners Bay Private Hospital

New England Area Health Service:

Armidale Hospital

Barraba Hospital

Bingara Hospital

Boggabri Hospital

Emmaville Hospital

Glenn Innes Hostel

Gunnedah Hospital

Guyra Hospital

Membership

Inverell Hospital
 Manilla Hospital
 Moree Hospital
 Narrabri Hospital
 Quirindi Hospital
 Tamworth Hospital
 Tenterfield Hospital
 Tingha Hostel
 Walcha Hospital
 Wialda Hospital
 Wee Waa Hospital
 Werris Creek Hospital

Northern Rivers Area Health Service:

Alstonville Community Health Centre
 Ballina Community Health Centre
 Ballina Hospital
 Bangalow Community Health Centre
 Bonalbo Community Health Centre
 Bonalbo District Hospital
 Byron Bay Community Health Centre
 Byron Bay District Hospital
 Cambell Hospital - Coraki
 Casino Community Health Centre
 Casino Memorial Hospital
 Coraki Community Health Centre
 Grafton Base Hospital
 Grafton Community Health Centre
 Kyogle Community Health Centre
 Kyogle Memorial Hospital
 Lismore Adult Health
 /Mental Health
 Services

Lismore Adult Health Community Health Centre
 Lismore Base Hospital
 Lismore Child & Family Health Community Health Centre
 Maclean Community Health Centre
 Maclean District Hospital
 Mullumbimby & District War Memorial Hospital
 Mullumbimby Community Health Centre
 Murwillumbah Community Health Centre
 Murwillumbah District Hospital
 Nimbin Community Health Centre
 Nimbin District Hospital
 Tweed Heads Community Health Centre
 Tweed Heads District Hospital
 Urbenville & District MPS Hospital
 Urbenville Community Health Centre

Royal Rehabilitation Centre Sydney

Sacred Heart Hospice

Northern Territory

Alice Springs Hospital
 Northern Territory Community Care
 The Northern Territory University - CENTRE

Queensland

Bayside District Health Service
 Beaudesert Hospital
 Bindaree Lodge
 Blue Care Library
 Canossa Care Health and Residential Services

Membership

Centre for Nursing Research, QUT

Cooloola Community Private Hospital

Dalby Health Service District

Good Shepherd Lodge

Gympie Hospital

Health Outcomes Unit Queensland Health

Mater Hospitals Bundaberg

Mater Misericordiae Hospital - CENTRE

Mayne Health:

Belmont Private Hospital

Caboolture Private Hospital

Logan Private Hospital

North West Private Hospital

St Andrews Private Hospital

Sunnybank Private Hospital

Andrea Ahern Private Hospital

Noosa Hospital

Selangor Private Hospital

Hillcrest Private Hospital

John Flynn Hospital & Medical Centre

Miles Health Service District

Moranbah Health Service District

Prince Charles Hospital & District Health Service

Redcliffe -Caboolture Health Service District

Redland Hospital, Bayside District Health

Rockhampton Hospital

Royal Childrens Hospital and District Health Service

St Andrew's War Memorial Hospital

St Lukes Nursing Service

University of Queensland Library

Wahroonga Retirement Village Hostel

Wesley Hospital

West Moreton District Health Services

Singapore

Singapore General Hospital

South Australia

Adelaide University Barr Smith Library

Aldersgate Village/Nursing Home

Ashford Hospital

Booleroo Centre Hospital

Burnside War Memorial Hospital

Calvary Hospital Adelaide Inc

Campbelltown Nursing Home

Ceduna Hospital Inc

Crystal Brook District Hospital Inc

Eastern Eyre Health & Aged Care

Flinders Medical Centre

Hamley Bridge Hospital

Julia Farr Centre

Membership

Karoonda & District Soldiers Memorial Inc

Keith & District Hospital Inc

Kingston Soldiers' Memorial Hospital Inc

Laura & District Hospital Inc

LHI Retirement Services

Lower Eyre Health Service

Memorial Hospital

Millicent & District Hospital & Health Service Inc

MINDA Incorporated

Modbury Public Hospital

Mt Gambier & Districts Health Service Inc

Noarlunga Health Services and Private Hospital

North Western Adelaide Health Service:

Lyell McEwin Health Service

Northern Domicillary Care

Northern Mental Health

Oakden Aged Care Services

Pregnancy Advisory Service

Queen Elizabeth Hospital

Tregenza Avenue Aged Care Service

Western Domicillary Care

Western Mental Health

Pika Wiya Health Service Inc

Port Adelaide Central Mission,
Wesley House

Port Augusta Hospital and
Health Service Inc

Port Broughton District Hospital & Health Service Inc

Port Lincoln Health & Hospital Services Inc

Port Pirie Regional Health Service

Quorn & District Memorial Hospital Inc

Repatriation General Hospital

Riverland Health Service:

Loxton Hospital Complex Inc

Waikerie Hospital & Health Services Inc

Renmark Paringa Hospital

Royal Adelaide Hospital - CENTRE

Salvation Army Aged Care Services

St Margaret's Hospital Inc

St Martin's Aged Care Facility

Southern Cross Nursing Home - Lourdes Valley

University of South Australia Library

Western Hospital Inc

Whyalla Hospital & Health Service Inc

Women's and Children's Hospital

Tasmania

Mayne Health:

Mersey Community Hospital

North West Regional Hospital

West Coast Health & Community Services

Membership

United States of America

Case Western Reserve University

Victoria

Alpine Health

Austin & Repatriation Medical Centre - Library

Ballarat Health Services

Beaufort & Skipton Health Service

Bodalla Aged Care Service

Brighton Rehabilitation Centre

Bundoora Extended Care Centre - SPECIALIST CENTRE

Freemasons Hospital

Hamilton Base Hospital

Hepburn Health Service

Heywood & District Memorial Hospital

Jessie McPherson Private Hospital

Kiverton Park Nursing Home

Management Advantage

Manningham Centre Association Inc

Mayne Health:

Cotham Private Hospital

Frances Perry House

John Fawkner Hospital

Linacre Private Hospital

Melbourne Private Hospital

Shepparton Private Hospital

Sunbury Private Hospital

The Geelong Private Hospital

Wangaratta Private Hospital

Warrigal Private Hospital

Waverley Private Hospital

Mt Alexander Hospital

Murray Valley Private Hospital

Old Colonists' Association Victoria

Portland and District Hospital

Robinvale District Health Service

Royal District Nursing Service - Library

Rural Northwest Health

Smith & Nephew Pty Ltd

Swan Hill District Hospital - Library

Tallangatta District Nursing Service

Tallangatta Hospital

University of Melbourne - STATE CENTRE

Upper Murray Health & Community Services

Wangaratta District Base Hospital

West Gippsland Healthcare Group

Western Australia

Carnarvon Regional Hospital

Central Great Southern Health
Service, Katanning Hospital

Curtin University of
Technology - CENTRE

Membership

Derby Health Services

East Pilbara Health Service

Exmouth Health Service

Mayne Health:

Attadale Hospital

Glengarry Hospital

Joondalup Health Campus

Mount Hospital

Northam Regional Hospital

Royal Perth Hospital

Upper Great Southern Health:

Dumbleyung District Memorial Hospital

Kondinin District Hospital

Kukerin Health Centre

Lake Grace District Hospital

Narrogin Regional Hospital

Pingelly District Hospital

Wagin District Hospital

Wickepin Health Centre

Williams Health Centre

Individual Membership

In addition The Joanna Briggs Institute Lead Centre distributes evidence based health care information direct to 170 individual members from a wide range of countries as listed below.

Canada

Denmark

Indonesia

Australia

New Zealand

Norfolk Island

Hong Kong

Saudi Arabia

Singapore

Spain

Sweden

Switzerland

United Kingdom

United States of America

Significant Events

The Collaboration recognises that the implementation of best practice information is reliant on; access to the information, effecting a change in culture that recognises the value of the evidence based health care (EBHC) approach, and provision of mechanisms to facilitate change. To this end the Collaboration is committed to a range of educational and promotional activities highlighting the worth of the approach and equipping clinicians and organisations to effectively participate in the process.

New South Wales Centre

The New South Wales Centre for Evidence Based Nursing and Midwifery, a joint undertaking between JBIEBNM, University of Western Sydney Macarthur and South Western Sydney Area Health Service was successfully launched in March 2001. The New South Wales Centre will provide a local point of contact for corporate and individual members in New South Wales and represents a significant gain in establishing JBIEBNM across Australia.

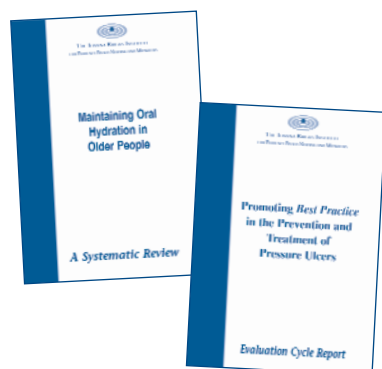
ACEBRAC

The Australian Centre for Evidence Based Residential Aged Care (ACEBRAC) is based at Bundoora Extended Care Centre and LaTrobe University. ACEBRAC (the first JBIEBNM specialist centre) aims to provide a greater focus on needs within residential aged care, and to this effect have commenced systematic reviews on topics related to quality of life and effectiveness in nursing care. A formal launch is scheduled for early in 2002.

Research

The Joanna Briggs Institute for Evidence Based Nursing and Midwifery (JBIEBNM) conducts a range of evidence based research activities designed to provide health professionals with high quality best practice information and to evaluate the impact of that information.

All publications developed through JBIEBNM are subject to widespread peer review and critical appraisal by state and specialist centres throughout the collaboration.



Research

Systematic Reviews

Systematic Reviews are the cornerstone of the evidence based approach to health care. Review topics arise from mechanisms put in place by the Collaboration to ensure that the areas of practice that are reviewed are a priority for health care professionals. The most significant source of review topics is by way of the Professional Advisory Forums that have been put in place by each of the collaborating centres.

Of the six Systematic Reviews published by JBIEBNM during 2000/2001 three were produced in association with the Department of Clinical Nursing Doctoral candidates. These topics reflect each Doctoral candidate's research agenda.

Suctioning Adults with an Artificial Airway

A Systematic Review, Number 9

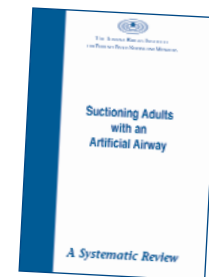
ISBN: 0-9577796-5-8

Reviewer

Lorraine Thompson

Review Panel

Dr Randall Morton, Ms Sid Cuthbertson, Mr John McArthur, Dr Les Galler, Ms Stephanie Brown, Ms Vivienne Pearce, Ms Tracy Grant, Ms Charmaine Munro, Ms Johanna Marshall, Ms Mata Forbes



Research

The Effectiveness of Mechanical Compression Devices in Attaining Hemostasis after Removal of a Femoral Sheath following Femoral Artery Cannulation for Cardiac Interventional Procedures

A Systematic Review, Number 10

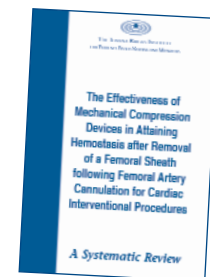
ISBN: 0-9577796-7-4

Reviewer

Tina Jones

Review Panel

Doctor of Nursing Student, Department of Clinical Nursing, Adelaide University. This Systematic Review was peer reviewed by specialists in the relevant area.



The Effectiveness of Propofol versus Midazolam for the Sedation of Adult Ventilated Patients in Intensive Care Units (ICUs)

A Systematic Review, Number 11

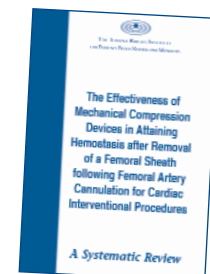
ISBN: 0-9577796-8-2

Reviewer

Judy Magarey

Review Panel

Doctor of Nursing Student, Department of Clinical Nursing, Adelaide University. This Systematic Review was peer reviewed by specialists in the relevant area.



Research

Maintaining Oral Hydration in Older People

A Systematic Review, Number 12

ISBN: 0-9577796-9-0

Reviewers

Brent Hodgkinson, David Evans and Jackie Wood

Review Panel

Ms Bronwyn Jones, Ms Julie Devey, Ms Margaret McLean, Ms Hillary Spacey, Mr Sam Goodes, Ms Viv Turner, Ms Raquel Kneebone



Post Harvest Management of Split Thickness Skin Graft Donor Sites

A Systematic Review, Number 13

ISBN: 0-9578276-0-1

Reviewer

Rick Wiechula

Review Panel

Doctor of Nursing Student, Department of Clinical Nursing, Adelaide University. This Systematic Review was peer reviewed by specialists in the relevant area.

Mr David Evans, Mr Brent Hodgkinson, Dr Mary FitzGerald, Dr Kenneth Walsh, Mr Andrew Jull, Ms Pam Sando, Associate Professor Rodney Cooter



Research

The Nursing Management of Fever in Children

A Systematic Review, Number 14

ISBN: 0-9578276-1-X

Reviewers

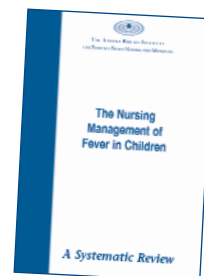
Robin Watts, Jeanette Robertson, Gail Thomas and Review Panel

Review Panel

Ms Lorraine Shepherd, Ms Geraldine Carlton, Ms Brenda Simmons, Mr Alan Kuipers-Chan, Ms Shirley Woodger, Ms Elaine Pavlos, Ms Liz Prime, Ms Rebecca Coghla

Clinical Consultants

Dr Paul Carman, Dr P McGonigle



Research

Evaluation Cycles

The Joanna Briggs Institute for Evidence Based Nursing and Midwifery (JBIEBNM) aims to improve nursing care delivery through the promotion and dissemination of best practice information. JBIEBNM is committed to demonstrate the effectiveness of providing this information by way of multi-site clinical studies known as evaluation cycles.

These cycles are carried out in stages, initially involving the verification of current practice and patient outcomes, specific to the related topic being evaluated. Often this process is established and undertaken at a number of survey sites. The second stage of the evaluation cycle involves the implementation of the recommendations, which are outlined in the *Best Practice* Information Sheets, to the relevant clinicians and health care team throughout the various survey sites. The final stage, following a thorough implementation and dissemination of the recommendations, requires surveying all sites initially involved, with the objective to measure any changes in practice and with the aim to improve patient outcomes and expand the body of knowledge in nursing.

The following Evaluation Cycles are in progress.

Research

Best Practice in the Management of Peripheral Intravascular Devices

Investigators

Professor Alan Pearson, Mr Rick Wiechula, Ms Ann Mitchell, Mr John McArthur, Professor Judith Parker, Professor Robin Watts, Professor Anne Chang.

Participant Institutions

Lead Centre, Queensland Centre, Victorian Centre, Western Australian Centre, New Zealand Centre
Royal Adelaide Hospital, Mater Misericordiae Health Services (Brisbane) Limited, Royal Melbourne, Royal Perth Hospital, Prince of Wales Hospital, Auckland Hospital, National Women's Hospital, Greenlane Hospital

Intravenous devices are a common and integral part of hospital practice for the intravenous administration of fluid, nutrients, medications, blood products and to monitor patient's haemodynamic profiles. The use of the intravenous device can be complicated by a variety of local or systemic infections. Catheter related infections, particularly catheter related blood stream infections, are associated with increased morbidity, mortality and prolonged length of hospital stay.

The study was designed to evaluate the impact of best practice information related to interventions for the management of peripheral intravenous devices. The study will build on previous studies in providing detail about the process of implementing best practice information.

Research

Best Practice in the Management of Falls

Investigators

Professor Alan Pearson, Mr Rick Wiechula, Professor Anne Chang, Mr John McArthur, Ms Karen Lai

Participants

Lead Centre, Western Australian Centre, New Zealand Centre

Royal Adelaide Hospital, Prince of Wales Hospital, Auckland Hospital, Box Hill Hospital

It has been estimated that one third of people over 65 years of age suffer at least one fall per year, and patients in institutions have a higher rate of falls. The high incidence of falls has been attributed to many factors including, trauma, debilitating disease, environmental hazards, age, mental status, length of hospital stay and gender. The problem of falls in acute care has been well recognised but remains a significant problem.

This study, the third in the series examined the impact of best practice information on the prevention of falls.

Research

Best Practice in the Prevention and Management of Mucositis

Investigators

Professor Alan Pearson, Mr Rick Wiechula, Ms Ann Mitchell

Participants

Lead Centre, Queensland Centre

Royal Adelaide Hospital, Mater Misericordiae Health Services (Brisbane) Limited

Oral mucositis, also called stomatitis, is a common, debilitating complication of cancer chemotherapy and radiotherapy, occurring in about 40% of patients. It results from the systematic effects of cytotoxic chemotherapeutic agents and from the local effects of radiation to the oral mucosa. Oral mucositis is inflammation of the mucosa or the mouth and ranges from redness to severe ulceration. Symptoms of mucositis vary from pain and discomfort to an inability to tolerate food or fluids. Mucositis may also limit the patient's ability to tolerate either chemotherapy or radiotherapy. Mucositis may be so severe as to delay treatment and so limit the effectiveness of cancer therapy. Patients with damaged oral mucosa and a reduced immunity resulting from chemotherapy and radiotherapy are also prone to opportunistic infection in the mouth. The mucositis may affect the patient's gum and dental condition, speech and self esteem may also be reduced, further compromising patients' responses to treatment and/or palliative care. It is therefore extremely important that mucositis be prevented whenever possible, or at least treated to reduce its severity and possible complications.

This study is the fourth in a series of multi-site projects examining the impact of best practice information and investigating the implementation process.

Research

Best Practice in the Management of Tracheal Suctioning of Adults with an Artificial Airway

Investigators

Ms Ann McKillop, Ms Sidney Cuthbertson, Mr Rick Wiechula, Ms Marion Eckert, Professor Jennifer Watson, Ms Sue Mann

Participants

New Zealand Centre, Lead Centre, Northern Territory Centre

Auckland Hospital, Royal Adelaide Hospital, Royal Darwin Hospital, Middlemore Hospital, Greenlane Hospital

Tracheostomy and endo-tracheal intubation are major procedures that some patients undergo as part of their stay in hospital. Managing such artificial airways can have a direct impact upon the outcomes experienced by the patient. Tracheostomy or endo-tracheal intubation, unless managed appropriately, can have direct implications for the patients' length of stay, complication development, mortality and morbidity rates. There has been to date very little research evidence to guide practitioners in the effectiveness of the care provided for patients with an artificial airway (endo-tracheal tube or tracheostomy) and much care has been influenced by rituals or trial and error experience.

One of the major procedures in caring for a patient who has an artificial airway (endo-tracheal tube or tracheostomy) is suctioning the airway to maintain its patency and to clear the tracheo-bronchial tree of secretions. Patients who have an artificial airway frequently have difficulty in being able to cough effectively as the presence of an artificial airway can interfere with the normal mechanisms for removing respiratory tract secretions. This procedure is not without risk, as it has the potential to create further complications in already critically ill patients. Tracheal suctioning is therefore an important intervention in caring for patient with an artificial airway, yet the practice surrounding suctioning of artificial airways can vary widely between institutions and practitioners, with much of the practice based on anecdotal and routine rather than research.

This survey seeks to evaluate the use of best practice information and investigate the implementation process.

Dissemination

Best Practice Information Sheets

Best Practice: Evidence Based Practice Information Sheets for Health Professionals is published by Blackwell Science-Asia. The series complements the systematic reviews published by The Joanna Briggs Institute and others and is aimed at base level clinicians. The series is distributed widely throughout Australia, New Zealand and Hong Kong via high circulation journals:

Australian Journal of Rural Health
The Australian Nursing Journal
The Collegian
Health & Community Services Union
International Journal of Nursing Practice
Kai Tiaki – Nursing New Zealand
nursing.aust

Circulation via journal inserts has increased from quarterly to bi-monthly in 2001.

In addition, *Best Practice* Information Sheets along with the source Systematic Review, if published by the Institute, are provided directly to health care institutions and individuals who are members of the Institute.

The following *Best Practice* Information Sheets have been released from July 2000 to June 2001.

Dissemination

Tracheal Suctioning of Adults with an Artificial Airway

Volume 4 Issue 4, 2000

ISSN 1329-1874

Released August 2000

Printed 102,000



Information Source

Thomson L. 2000, Suctioning Adults with an Artificial Airway, *A Systematic Review* No. 9, JBIEBNM, Adelaide.

The Administration and Supply of Medications by Registered Nurses in Rural and Remote Areas

Volume 4 Issue 5, 2000

ISSN 1329-1874

Released November 2000

Printed 10,000



Information Source

The following sources were used to guide panel opinion:

Queensland Nursing Council, 1998, Final report of the Scope of Nursing Practice Project, Brisbane

Queensland Health & Royal Flying Doctor service of Australia (Qld). 1998, Primary Clinical Care Manual, Queensland Health, Brisbane

Queensland Health, 1997, Drug Therapy Protocols, Isolated Practice

Queensland Health, 1997, Health (Drugs and Poisons) regulation 1996

Dissemination

Knowledge Retention from Pre-operative Patient Information

Volume 4 Issue 6, 2000

ISSN 1329-1874

Released November 2000

Printed 102,000



Information Source

Hodgkinson B, Evans D and O'Neill S. 2000, Knowledge Retention from Pre-Operative Patient Information, *A Systematic Review* No. 7, JBIEBNM, Adelaide.

Maintaining Oral Hydration in Older People

Volume 5 Issue 1, 2001

ISSN 1329-1874

Released March 2001

Printed 102,000



Information Source

Hodgkinson B, Evans D and Wood J. 2000, Maintaining Oral Hydration in Older People, *A Systematic Review* No. 12, JBIEBNM, Adelaide.

Dissemination

Graduated Compression Stockings for the Prevention of Post-operative Venous Thromboembolism

Volume 5 Issue 2, 2001

ISSN 1329-1874

Released May 2001

Printed 100,000



Information Source

Wells PS, Lensing AWA, Hirsh J. Graduated compression stockings in the prevention of post-operative venous thromboembolism. *Archives of Internal Medicine* 1994;154:67-72.

Amarigiri SV, Lees TA. Elastic compression stockings for prevention of deep vein thrombosis (Cochrane Review). In: *The Cochrane Library*, Issue 3. Oxford: Update Software; 2000.

Smoking Cessation Interventions and Strategies

Volume 5 Issue 3, 2001

ISSN 1329-1874

Released July 2001

Printed 110,000



Information Source

Wiechula R and Lockwood C. 2000, Smoking Cessation Interventions and Strategies for Hospitalised Patients: *An Evidence Based Integrative Review* commissioned by Mr Andrew Zoerner, Director, Health Promotion Unit, Royal Adelaide Hospital with initial funding from the Anti-Tobacco Ministerial Advisory Taskforce.

Dissemination

Changing Practice

The Series *Changing Practice* has been designed to support health professionals wishing to implement evidence based practice and to complement The Joanna Briggs Institute series *Best Practice*.

Two issues of *Changing Practice* have been made available to the public and members on the JBIEBNM web site.

This series has been designed to be available in an electronic format only.

Appraising Systematic Reviews

Volume 1 Issue 1, 2000

<http://www.joannabriggs.edu.au/CP1.pdf>

Developed by Mr David Evans, JBIEBNM, Adelaide and Professor Anne Chang of The Hong Kong Centre for Evidence Based Nursing and Midwifery (A Collaborating Centre of The Joanna Briggs Institute).



An Introduction to Systematic Reviews

Volume 2 Issue 1, 2001

<http://www.joannabriggs.edu.au/CP2.pdf>

Developed by Mr David Evans, JBIEBNM, Adelaide and peer reviewed by The Joanna Briggs Institute Collaborating Centres.



Dissemination

Web Site

<http://www.joannabriggs.edu.au>

Staff at the Lead Centre in Adelaide maintain The Joanna Briggs Institute web site.

The Joanna Briggs Institute web site at <http://www.joannabriggs.edu.au> operates as both the international public face of JBIEBNM and as a valuable electronic archive of JBIEBNM publications available to members.

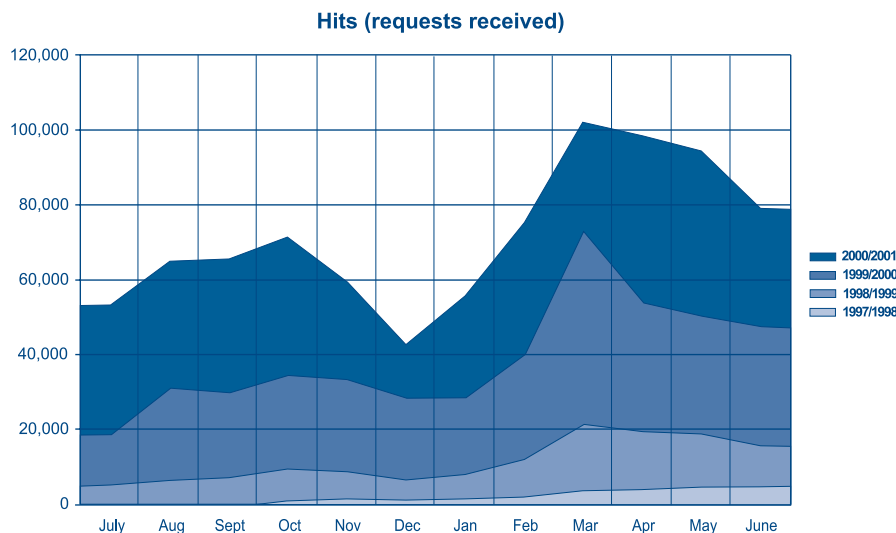
The public area allows free access to electronic copies of our *Best Practice* Information Sheets, Systematic Review extracts and protocols, the *Changing Practice* series, membership information, links, and two popular public bulletin boards - the "Notice Board" and "Research Room".

Collaborating Centres of the Institute have their own pages through which newsletters and items of local interest are published.

Corporate and Individual Members of the Institute can also access the password protected Member's area which includes full electronic copies of all Systematic Reviews produced by JBIEBNM and completed *Best Practice* Information Sheets not yet published by Blackwell Science-Asia. New to the member's area are the on line clinical practice manuals and integrative literature reviews.

Firmly adhering to the aims and objectives of The Joanna Briggs Institute, the <http://www.joannabriggs.edu.au> web service provides a platform for the wide scale dissemination of Evidence Based Health Care information on an international scale.

The web site has seen a steady increase in pages downloaded, with access to pages peaking near 29,000 per month during university semesters. The JBIEBNM web site has now hosted over 54,000 distinct hosts (separate computers) and is receiving more than 1000 new visitors each week from over 125 different domains.



Implementation

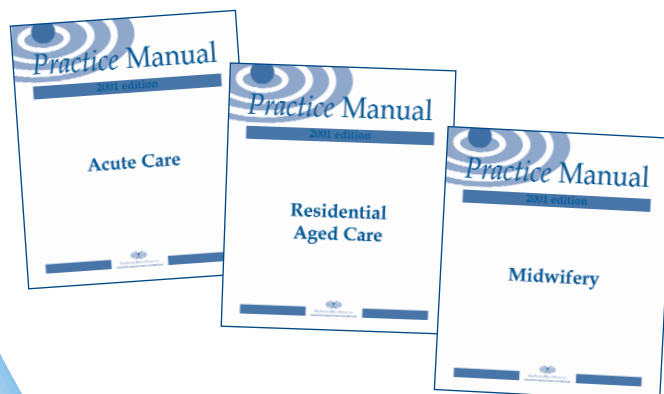
Practice Manuals

The practice manual service continues to generate a significant volume of output, and attract a high level of interest around Australia and New Zealand. The Coordinator Clinical Information has revised both the JBIEBNM Acute and Aged Care Practice Manuals, and provided copies of the relevant manual to all corporate members. A number of which have undertaken internal staff evaluations on the service with favourable results (Calvary SA, Western SA).

The practice manual service has examined the feasibility of developing a practice manual for mental health, in association with the Department of Clinical Nursing (Adelaide University), and the State Wide Mental Health Service. Furthermore, the Midwifery Practice Manual interventions have undergone a major review in association with the King Edward Hospital (WA). On completion of the integrative reviews of the relevant midwifery clinical interventions, the manual will be disseminated across JBIEBNM for wider critique.

The primary changes in the practice manual service have been the increase in personnel working on providing the service through Ms Zoe Jordan (Research Assistant), and Karen Smith (RN, Royal Adelaide Hospital Intensive Care Unit) and upgrading of computing software to desktop publishing tools.

Integrative reviews generated for the practice manual service are now being placed on the JBIEBNM web site. Work has begun on developing a database of reviews as a quality control exercise to manage the annual collation and revision process associated with maintaining the currency of each review. To date, 110 reviews have been developed this year on topics which span the range of clinical specialties associated with nursing practice.

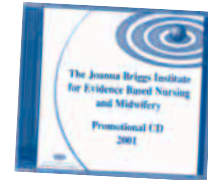


Implementation

Promotional CD ROM

A multi-platform promotional CD ROM was developed in time for the New South Wales Centre launch. The CD was designed to provide a multimedia perspective on JBIEBNM activities, and facilitate the dissemination of JBIEBNM materials in forms reflective of advances in Information Technology.

The promotional CD ROM was designed to provide information able to be integrated with internet and intranet access to research based information, as electronic means of dissemination generates increasing levels of interest from corporate members. Practice manuals provided on CD ROM to corporate members and collaborating centres, and Integrative reviews e-mailed to corporate members in New South Wales for use on intranet, demonstrate the demand for up to date information. Use of fluid technologies is an emerging method of dissemination. JBIEBNM has capitalised on this trend by providing integrative reviews on a frequent basis, with the option to regularly update and receive feedback through frequent internet communication with corporate members.



Workshops

Developing first draft of midwifery practice manual, Perth, 15-18 November 2000.

Introduction to Evidence Based Practice for New Graduates, Repatriation General Hospital, 12 December 2000.

Presentation on issues and plans for development of single regional practice manual with Area Directors of Nursing, Renmark Hospital (SA), 21 December 2000.

Introduction to Evidence Based Practice and JBIEBNM Membership services, Women's and Children's Hospital Adelaide, 20 March 2001.

Refresher Course Students, an introduction to evidence based practice, Royal Adelaide Hospital, 14 May 2001.

Best Practice Group versus Individual Therapy for the Treatment of Depression, Child and Adolescent Mental Health Services (Women's and Children's Hospital), 29 May 2001.

Systematic Review workshops, to corporate members in collaboration with ACEBRAC and the Northern Territory Centre, provided by David Evans and Brent Hodgkinson.

Lead Centre South Australia

The Joanna Briggs Institute for Evidence Based Nursing and Midwifery

Royal Adelaide Hospital and Adelaide University

The Lead Centre is the headquarters and coordinating site for the Collaboration.

Lead Centre staff are involved in a range of service activities within Royal Adelaide Hospital and are active members of the Department of Clinical Nursing, Adelaide University. Staff hold clinical titles with the department and are involved in teaching and supervision of post graduate students.

The following reports detail activities specific to the Lead Centre and its staff in addition to activities that have been undertaken in conjunction with other JBIEBNM Centres. This reflects the dual role of the Adelaide office as Lead Centre for the Collaboration and Centre for the state of South Australia.

Lead Centre South Australia

Staff

Acting Director and Coordinator Evaluation

Rick Wiechula, RN, OrthoNursCert, BA(Flinders), BN(UniSA), MNSc(Adelaide), MRCNA

Acting Deputy Director and Coordinator Reviews

David Evans, RN, CritCareCert, DipN(Flinders), BN(Flinders), MNS(Flinders), MRCNA

Core Team/Management Committee

Coordinator Education and Implementation

Craig Lockwood, RN, BN(UniSA), GradDipClinNurs(Adelaide), MNSc(Adelaide), MRCNA

Coordinator Clinical Information (until March 2001)

Astrid Hall, RN, OH&SCert, DipAppSc(NursStudies)(SCAE), GradDipAnaesNurs(Adelaide)

Coordinator Clinical Information (from March 2001)

Amanda Roneberg, RN, CardiacCareCert, GradDipCardiacNurs(Adelaide)

Coordinator Primary Research (until April 2001)

Kenneth Walsh, RPN, RGN, BNurs(UNE) PhD(Adelaide)

Coordinator Primary Research (from April 2001)

Judy Magarey, RN, CritCareCert, DipNurs(SACAE), BNurs(Flinders), MNurs(Research)(Flinders)

Project Officer - Evaluations (from October 2000)

Marion Eckert, RN DipAppSc(Nurs)(Flinders), HyperbNursCert, Card,CareCert, GradDipCardNurs, MNSc(Adelaide),MRCNA

Research Officer Evaluation & Reviews

Brent Hodgkinson BSc(Hons)(Ottawa), MSc(Ottawa)

Research Assistant

Zoe Jordan, BA

Communications Officer

Anthea Court

Manager Administration

Roy Sneddon

Secretary

Annette Hoffrichter

Lead Centre South Australia

Research Associates

The Research Associates participate in a range of activities for the Lead Centre. Principally they participate in review groups for Systematic Reviews providing an invaluable link to clinical practice and the organisations that utilise the best practice information provided by the collaboration.

Mary FitzGerald, RN, DipNurs(London), MNurs(Wales), PhD(UNE), FRCNA

Helen McCutcheon, RN, RM, BA(Adelaide), MPH(Adelaide), PhD(UniSA)

John Field, RN, BLegSt(Maquarie), ADNE(Cumberland), GradCertManag(UNE), FCN(NSW), FRCNA

Andrea Averis, RN, RM, BSc(Adelaide), MSc(PHC)(Flinders), PhD(Flinders), FRCNA, FCN(NSW), FGLF

Judith Berry, RN, BNurs, MNSc(Deakin), MRCNA

Marg Cattonar, RN, BNurs, MNSc(Adelaide)

Barry Dudley, RN, BNurs

Helen Jeffrey, RN, BNurs, MNSc(Adelaide)

Tina Jones, RN, CritCareCert, BNurs(UniSA), MNSc(Adelaide), MRCNA

Leonnie Lambert RN, DipAppSc(Nurs), DipAppSc(NursManag), BNurs(SACAE)

Leslye Long, RN, CritCareCert, CorCareCert, DipAppSc(Nurs)(SACAE), BAppSc(Nurs)(SACAE), MHA(UNSW), PhD(Flinders), MRCNA

Judy Magarey, RN, CritCareCert, DipNurs(SACAE), BNurs(Flinds), MNurs(Research)(Flinders)

Lorraine Maguire, RN, BBus(HAdmin)

Ann O'Donnell RN, RPN, DipAppSc(Nurs)(Flinders), BNurs(Flinders), Grad Dip HCouns(UniSA), ANZCHN, AFCHSE, CPE

Sue O'Neill, RN, BNurs, MNSc(Adelaide)

Robyn Parkes, RN, BNurs

Kathleen Read, RN, CritCareCert, IntCareCert, DipAppSc(NursManag)(SACAE), BNurs(SACAE), MNSc(Adelaide)

Heidi Silverston, RN, OncNursCert, BNurs(Flinders), MHA(UNSW)

Kenneth Walsh, RPN, RGN, BNurs(UNE) PhD(Adelaide)

Jackie Wood, RN, BNurs

Lead Centre South Australia

Notable Professional and Community Activities

Staff of the Institute are involved in a wide range of professional health care activities. Staff also provide representation specifically as experts in evidence based health care with the following organisations.

Mr Rick Wiechula

Member, Australian Wound Management Association, Pressure Ulcer Interest Sub Committee

Mr David Evans

Member, Australian Patient Safety Foundation

Member, National Falls Task Force

Lead Centre South Australia

Significant Events

The Professional Advisory Forum (PAF) is South Australia's primary annual event for ensuring the review topics and research directions chosen by the Adelaide Centre reflect the information needs of South Australian members. The 4th PAF meeting was held at the Women's and Children's Hospital during March 2001. Those present were updated on all aspects of JBIEBNM activities, and nominated topics to be considered for Systematic Review during the year. The following topics were prioritised for research:

Nurse Led Clinics

Nursing Management of Lower Leg Oedema

Peritoneal Dialysis Exit Site Care

Management of Diabetes

The JBIEBNM was involved in the organisation and presentation of the SA Nursing Excellence Awards, and Co-sponsored the award for research with the Department of Clinical Nursing, Adelaide University.

Ms Judy Magarey was awarded the winner of Best Nursing Review Paper ACCN presented at the 25th Australian and New Zealand Annual Scientific Meeting on Intensive Care

Lead Centre South Australia

Notable Visitors

Yee Kew Lee, National University Hospital, Singapore

Yoke Lan Lee, KK Women's & Children's Hospital, Singapore

Juang Fong Boon, Ministry of Health, Singapore

Guek Choo Han, Ministry of Health Singapore

Professor Yasuko Takahashi, PhD RN, Department of Advanced Clinical Nursing, The Graduate School of Medicine, The University of Tokyo

Professor Shigeyo Okuno, Department of Fundamental Nursing, The University of Tokyo

Miyoko Endo, RN, Department of Fundamental Nursing, The University of Tokyo

Professor Anne Marie Rafferty, Scotland

Professor Alison Tierney, Professor of Nursing, Head of Department, Department of Nursing Studies, Edinburgh University

Professor David Thompson, Professor of Nursing, York University, Professor of Nursing Research and Development at the Department of Health, UK

Professor Alison Kitson, Director, Royal College of Nursing Institute, UK

Professor Michael Clinton, Division of Health Sciences, Curtin University of Technology, Western Australia.

Lead Centre South Australia

Research

Research

Systematic Reviews

The Management of Acute Confusion in Hospital

Reviewer: Hodgkinson B, Evans D and Lambert L

Review Panel

Carol Moore, Ms Jackie Wood, Ms Mandy Glover, Ms Bronwyn Langman, Mr Craig Rawson, Ms Anne Hill, Mrs Paula Butterworth, Ms Julie Mead, Ms Angela Little and Dr Phillipa Hay

Temperature Management During the Peri-operative Period

Evaluation Cycles

The Lead Centre is coordinating the following Evaluation Cycles with other Collaborating Centres. For more detail please refer to pages 19-23.

Best Practice in the Management of Peripheral Intravascular Devices

Best Practice in the Management of Falls

Best Practice in the Prevention and Management of Mucositis

Best Practice in the Management of Tracheal Suctioning of Adults with an Artificial Airway

Consultancies

The expertise of the research staff of the Lead Centre is now well recognised. As a result the Centre has been approached by a number of individuals and organisations to conduct consultancies of research projects relating to Evidence Based Health Care (EBHC). The following are reports of consultancies undertaken during 2000/2001.

Smoking Cessation Interventions and Strategies for Hospitalised Patients: An Evidence Based Integrative Review

Consultant Reviewers/Researchers

Mr Rick Wiechula, Mr Craig Lockwood

This consultancy for an evidence based integrative review was commissioned by Mr Andrew Zoerner, Director, Health Promotion Unit, Royal Adelaide Hospital with initial funding from the Anti-Tobacco Ministerial Advisory Taskforce.

An Integrative Systematic Review of Nursing Curricula, Undergraduate Clinical Education & Transition Support for New Graduates

Consultant Reviewers/Researchers

Dr Mary FitzGerald, Professor Jan Pincombe, Dr Helen McCutcheon, Mr David Evans, Mr Rick Wiechula, Ms Zoe Jordan

This consultancy for a systematic review was commissioned by the Queensland Nursing Council and was conducted by the Department of Clinical Nursing and The Joanna Briggs Institute for Evidence Based Nursing and Midwifery. The consultancy was completed in February of 2001.

A Systematic Review of Indicators of Competence for Practice & Protocol for Validation of Indicators of Competence

Consultant Reviewers/Researchers

Dr Mary FitzGerald, Dr Ken Walsh, Dr Helen McCutcheon, Mr Brent Hodgkinson, Mr Craig Lockwood, Professor Jan Pincombe, Ms Zoe Jordan

This consultancy for a systematic review was commissioned by the Queensland Nursing Council and was conducted by the Department of Clinical Nursing and The Joanna Briggs Institute for Evidence Based Nursing and Midwifery. The consultancy was completed in May of 2001.

Lead Centre South Australia

Research

Primary Research

The Institute seeks to undertake primary research in areas where its systematic reviews indicate a lack of high quality research evidence and in areas of strategic value to the Institute. Following on from the systematic reviews that have been completed to date, the Institute has identified several areas needing further research. Proposals related to these areas were submitted for funding to a variety of sources in 2000/2001.

Pilot studies in progress include:

A comparative study to determine the efficacy of using a dietary fibre supplement to manage constipation in post cardiac surgery patients

Investigators: Dr H McCutcheon, Dr L Long, Ms J Magarey, Mr S Billingham, Mr P Hill

A comparative study to determine the efficacy of using routine versus nurse determined vital signs monitoring in post operative patients

Investigators: Dr M FitzGerald, Dr H McCutcheon, Ms K Athanasiadis

Research Grants

FitzGerald M, Pincombe J, McCutcheon H, Evans D and Wiechula R, Jordan Z. 2000, Systematic review of models of undergraduate clinical education, nursing curricula and transition support for new graduates, Tender for the Queensland Nursing Council, Brisbane (\$52,472).

FitzGerald M, Walsh K, McCutcheon H, Hodgkinson B, Lockwood C, Pincombe J, Jordan Z. 2000, A Systematic Review of Indicators of Competence for Practice & Protocol for Validation of Indicators of Competence, Queensland Nursing Council (\$36,000).

Bauman A, Bashford G, Courtney M, Creasey H, Clark R, Evans D, Edwards H, FitzGerald M, Kuys S, McCutcheon H, March L, Newman B, Ni S, Oldenburg B, Sherrington C, Salgado R, Varghese P, Worringham C and Walsh K. (Sub-program F3 Team) Health Research Partnership in Injury Grant, 2000, Preventing Falls and Injury in Hospitals.

This grant is a component of Lord S, Kerr G, Anstey K, Broe A, Cameron I, Cumming R, Fitzpatrick R, Steele J and Wood J. (Partnership Chief Investigators) 2001-2006 National Health and Medical Research Council, Canberra, \$2.16 million.

Wiechula R, Lockwood C. 2000 Smoking Cessation Interventions and Strategies for Hospitalised Patients: An Evidence Based Integrative Review, Royal Adelaide Hospital Health Promotion Unit. (\$2,200).

Dissemination

Publications

Systematic Reviews

Hodgkinson B, Evans D and Wood J. 2001, Maintaining Oral Hydration in Older People *A Systematic Review* No. 12, JBIEBNM, Adelaide.

Jones T. 2000, The Effectiveness of Mechanical Compression Devices in Attaining Hemostasis after Removal of a Femoral Sheath following Femoral Artery Cannulation for Cardiac Interventional Procedures *A Systematic Review* No. 10, JBIEBNM, Adelaide.

Magarey J. 2000, The Effectiveness of Propofol versus Midazolam For The Sedation of Adult Ventilated Patients In Intensive Care Units (ICUs) *A Systematic Review* No 11, JBIEBNM, Adelaide.

Wiechula R. 2001, Post Harvest Management of Split Thickness Skin Graft Donor Sites *A Systematic Review* No. 13, JBIEBNM, Adelaide.

Best Practice Information Sheets

JBIEBNM. 2000, The Administration and Supply of Medications by Registered Nurses in Rural and Remote Areas, *Best Practice* Vol 4, Iss 5, Blackwell Science-Asia, Australia.

JBIEBNM. 2000, Knowledge Retention from Pre-operative Patient Information *Best Practice* Vol 4, Iss 6, Blackwell Science-Asia, Australia.

JBIEBNM. 2001, Maintaining Oral Hydration in Older People *Best Practice* Vol 5, Iss 1, Blackwell Science-Asia, Australia.

JBIEBNM. 2001, Graduated Compression Stockings for the Prevention of Post-operative Venous Thromboembolism *Best Practice* Vol 5, Iss 2, Blackwell Science-Asia, Australia.

JBIEBNM. 2001, Smoking Cessation Interventions and Strategies *Best Practice* Vol 5, Iss 3, Blackwell Science-Asia, Australia.

Lead Centre South Australia

Dissemination

Journal Articles

Evans D. 2001, Systematic reviews of nursing research, *Intensive & Critical Care Nursing*, 17, 51-57.

Evans D, Hodgkinson B, Lambert L and Wood J. 2001, Fall risk factors in the hospital setting: a systematic review, *International Journal of Nursing Practice*, 7, 38-45.

Evans D and Kowanko I. 2000, Literature reviews: evolution of a research methodology, *Australian Journal of Advanced Nursing*, 18(2) 31-36.

Magarey J. 2001, Elements of a Systematic Review, *International Journal of Nursing Practice*, Vol 7, No 6.

Borbasi S, Cameron K, Quested B, Olver I, To B and Evans D. (Accepted for Publication). More than a sore mouth: patients' experience of mucositis, *Nursing Oncology Forum*.

Charnock Y and Evans D. (Accepted for Publication). Nursing management of chest drains: a systematic review, *Australian Critical Care*.

Evans D and Pearson A. (Accepted for Publication). Systematic reviews of qualitative research, *Clinical Effectiveness in Nursing*.

Evans D and Pearson A. (Accepted for Publication). Systematic reviews: gatekeepers of nursing knowledge, *Journal of Clinical Nursing*.

Evans D, Hodgkinson B and Berry J. (Accepted for Publication). Vital signs in hospital patients: a systematic review, *International Journal of Nursing Studies*.

FitzGerald M, McCutcheon H, Court A and Athanasiadis K. (Accepted for Publication). Engaging Nurses in Clinical Research, *Nursing Times*.

Magarey J. (Accepted for Publication). Propofol or Midazolam? Which is Best for Sedation of Adult Ventilated Patients in Intensive Care Units? A Systematic Review, *Australian Critical Care*.

Newsletters

The Joanna Briggs Institute *Bulletin* is published quarterly and is disseminated to Corporate and Individual Members as well as being used as a promotional tool.

The *Bulletin* highlights significant achievements, promotes the centres across Australia and overseas and keeps members up to date on the progress of the Institute.

Newsletters were printed and disseminated in:

September & December 2000

March & June 2001

Lead Centre South Australia

Dissemination

Conferences/Presentations

Charnock Y and Evans D. 2001, A systematic review into the management of chest drains, Research Seminar Series, Adelaide University, Adelaide.

Eckert M. 2001, Presented to the Graduate Nurse Program, Registered Nurses at the Repatriation Hospital, promoting The Joanna Briggs Institute for Evidence Based Nursing and Midwifery in collaboration with the Department of Clinical Nursing, 9 February.

Eckert M. 2000, Invited Speaker, South Australian Cardiac Nurses Research Forum. Presented: How does living with an implantable cardioverter defibrillator affect the lives of patients and their families?

Evans D. 2001, Systematic review of nursing curricula, undergraduate clinical education and transition support of new graduates, Nursing Education and Employment Conference, RCNA, Brisbane.

Evans D. 2001, Current falls prevention initiatives in hospitals, National Falls Prevention Forum, Commonwealth Department of Health, and Aged Care, NSW Health & Victorian Department of Human Services, Sydney.

Evans D. 2001, Falls prevention - workforce training in hospitals, National Falls Prevention Forum, Commonwealth Department of Health and Aged Care, NSW Health & Victorian Department of Human Services, Sydney.

Evans D. 2000, A systematic review on the effectiveness of music as a diversion for hospital patients, Sixth Nursing Practice Conference, Adelaide.

Evans D. 2000, Falls in acute hospitals, National Falls Prevention for Older People Initiative Forum, Commonwealth Department of Health and Aged Care, Canberra.

Evans D. 2000, Falls in the hospital setting, Falls Prevention in Older People: South Australian Forum, Department of Human Services, Adelaide.

Evans D and Keefe D. 2000, Evidence based practice: collaboration in action, Medical Grand Round, Royal Adelaide Hospital, Adelaide.

Hodgkinson B. 2000, Systematic Reviews of Nursing Research, Alice Springs Hospital.

Hodgkinson B. 2000, Systematic Reviews of Nursing Research, Darwin, Northern Territory.

Lockwood C. 2000, Development of an Evidence Based Practice Manual Across a Health Service, Riverland Health Units, Renmark Hospital.

Magarey J. 2001, Invited Speaker Inaugural Institute of Continuing Education Conference, Sedation in ICU & Respiratory Assessment.

Lead Centre South Australia

Dissemination

Magarey J. 2000, The Practicalities of Conducting A Systematic Review joint paper presented with Ms Tina Jones, Sixth Nursing Practice Conference.

Magarey J. 2000, Propofol or Midazolam? Which is Best for the Sedation of Adult Ventilated Patients in Intensive Care Units (ICUs)? A Systematic Review, Canberra.

Wiechula R, Hodgkinson B and Lockwood C. 2000, The Implementation of Evidence Based Practice, RCN Workshop, St Catherine's College, Oxford, UK.

Centre Promotion and Exhibits

The Joanna Briggs Institute display was present at the following events.

Continuum of Care: Across the Health Terrain 'From the Bush to the Big Smoke', Darwin, August 2000

Medical and Surgical Conference Broadening our Boundaries: Excellence in Medical/Surgical Nursing, Brisbane, August 2000

Sixth Nursing Practice Conference Nursing: Charting a New Course, Adelaide, November 2000

Launch of The New South Wales Centre for Evidence Based Nursing and Midwifery, Liverpool, March 2001

RCNA Nursing Careers, Education & Employment Expo, Adelaide, May 2001

Additionally promotional information was placed in conference bags at the following events:

RCNA, Australian National Forum, 10-11 May 2001

ICN Congress, Copenhagen, 10-16 June 2001

Lead Centre South Australia Implementation

45

Implementation

Teaching and promotion are maintained as combined activities of the Institute, with a range of workshops offered in association with corporate membership. During this year, JBIEBNM staff have maintained involvement in postgraduate education by coordinating and teaching on behalf of the Department of Clinical Nursing.

Workshops/Courses

Lockwood C. Workshops on the following *Best Practice* Information Sheets, Royal Adelaide Hospital, 18 May 2001.

- Tracheal Suctioning of Adults with an Artificial Airway

- Knowledge Retention from Pre-operative Patient Information

- Maintaining Oral Hydration in Older People

- Graduated Compression Stockings for the Prevention of Post-operative Venous Thromboembolism

Lockwood C. An Introduction to Evidence Based Practice, CAMHS, Enfield, South Australia, 2001.

Lead Centre South Australia

Financial Statement

The Joanna Briggs Institute for Evidence Based Nursing & Midwifery
Profit and Loss Statement Year Ending 30 June 2001

Revenue		
Carried forward		
Opening Balance	<u>\$26,226</u>	\$26,226
Revenue Raised		
Dept of Human Services Grant	\$250,000	
Membership & Other Revenue	<u>\$381,922</u>	<u>\$631,922</u>
Total Revenue Raised		\$658,148
Less Operating Expenses		
Salaries and Wages		
Salaries and Wages	<u>\$323,552</u>	<u>\$323,552</u>
Goods and Services		
Printing	\$121,677	
Photocopying	\$8,654	
Telephone	\$346	
Office & General Expenses	\$8,793	
Advertising	\$3,668	
Stationary Issues and Supplies	\$22,626	
Postage	\$29,598	
Fees & Charges	\$25,200	
Equipment	\$25,098	
Repairs	\$2,963	
Computer	\$11,921	
Travel	\$15,638	
Consultants Fees	\$20,860	
Course/Conference Fees	<u>\$2,957</u>	<u>\$299,999</u>
Total Operating Expenses		<u>\$623,551</u>
Operating Profit (Loss)		\$34,597

Hong Kong Centre

The Hong Kong Centre for Evidence Based Nursing and Midwifery

The Chinese University of Hong Kong

Staff

Director

Professor Anne Chang

Deputy Director

Professor Janita Chau

Core Team/Management Committee

Professor Anne Chang, Professor, Department of Nursing, The Chinese University of Hong Kong (CUHK)

Ms Peggy Chan, Ward Manager, Department of Medicine and Therapeutics, Prince of Wales Hospital (PWH)

Professor Sally Chan, Department of Nursing, CUHK

Professor Janita Chau, Department of Nursing, CUHK

Ms Karen Cheung, Nurse Specialist, NICU, Prince of Wales Hospital

Professor Lam Lai Wah, Department of Nursing, CUHK

Ms Rossini Lam, Nursing Officer, Department of Surgery, Prince of Wales Hospital

Ms Idy Lee, Nurse Specialist, Oncology Unit, Prince of Wales Hospital

Professor Valerie Levy, Department of Nursing, CUHK

Hong Kong Centre

Advisory Panel

Professor Anne Chang, Professor, Department of Nursing, CUHK

Dr Dickson Chang, Deputy Director, Hospital Authority

Mr Victor Chow, Principal, School of Nursing, Prince of Wales Hospital

Professor T F Fok, Associate Dean, Faculty of Medicine, CUHK

Dr Clarke Hazlett, Director of Educational Services, Faculty of Medicine, CUHK

Ms Hermia Ho, General Manager (Nursing), Prince of Wales Hospital

Mr Michael Ho, Chairman, Association of Hong Kong Nursing Staff

Dr Susie Lum, Senior Executive Manager (Nursing), Hospital Authority

Professor Ann Mackenzie, Chairman & Head of Dept, Department of Nursing, CUHK

Dr William Wong, Clinical Coordinator, Prince of Wales Hospital

Ms Betty Woo, Chief Nursing Officer, Department of Health, Hong Kong Special Administrative Region

Hong Kong Centre

Significant Events

There have been 2 meetings of the Management Committee of the Hong Kong Centre for Evidence Based Nursing and Midwifery (HKCEBNM). The main activities have been concerned with education of nurses in Hong Kong and in our partner hospital – Prince of Wales Hospital (PWH) and in the wider Hong Kong nursing community.

The evidence based nursing and midwifery seminar "Application of Psychotherapeutic Interventions to the Care of Depressed Clients" held in December 2000 was well received by the participants with a good attendance of 72. The participants commented that the seminar helped them to gain more insight into evidence based practice in caring for depressed clients. The panel discussion was rated very positive with lots of participation from the audiences. The participants also expressed their interest in learning more about the application of evidence based nursing and midwifery to nursing practice and wanted more evidence based nursing and midwifery workshops and seminars organized periodically.

The Institute for Advanced Nursing has joined JBIEBNM as an educational institution and discussions continue with the Hospital Authority regarding membership of their hospitals.

Notable Visitors

Professor Wang Wenru, Professor Zhou Yuling, Professor Yue Yafei, from Xian JiaoTong University

17 delegates from Hua Xia Foundation

Visitors from The Capital University of Medical Sciences of Beijing

19 Master of Nursing students from Programme of Higher Nursing Education (POHNED), China

23 nurses from Taipei City Nurses Association

Hong Kong Centre

Research

Research

Systematic Reviews

The Effects of Deep Breathing & Coughing Exercises on Post-operative Outcomes

Continuing Research Projects

Chang A, Molassiotis A, Chan CWH and Lee YM. 2000, Nursing management of oral mucositis in cancer patients. The 2nd phase of this study, a quasi-experimental study, on patients receiving chemotherapy is nearing completion.

Completed Research Projects

1 paper published: Nahas V, Chang AM and Molassiotis A. 2001, Evidence-Based Practice: Guidelines for managing peripheral intravascular access devices. *The Journal of Nursing Administration*, 31(4), 164-165.

Hong Kong Centre

Dissemination

Dissemination

Publications

Callaghan P, Eves FF, Norman P, Chang AM and Cheung YL. (Accepted for Publication). Applying the Transtheoretical Model of Change to Exercise in Young Chinese People. *British Journal of Health Psychology*.

Chan CWH and Chang AM. 2000, Experience of Palliative Home Care According to Caregiver's and Patients' Ages in Hong Kong Chinese People. *Oncology Nursing Forum*, 27(10), 1601-1605.

Chan CWH and Molassiotis A. 2000, The impact of fatigue on Chinese cancer patients in Hong Kong. *Supportive Care in Cancer*, 9, 18-24.

Chan S, Mackenzie AE and Jacobs P. 2000, Cost-Effectiveness Analysis of Case Management Versus a Routine Community Care Organization for Patients with Chronic Schizophrenia. *Archives of Psychiatric Nursing*, XIV(2), 98-104.

Chan S, Mackenzie AE, Ng DTF and Leung J. 2000, An evaluation of the implementation of case management in the community psychiatric nursing service. *Journal of Advanced Nursing*, 31(1), 144-156.

Cheng KKF, Molassiotis A and Chang AM. (Accepted for Publication). An oral care protocol intervention to prevent chemotherapy-induced oral mucositis in pediatric cancer patients. A preliminary report. *European Journal of Oncology Nursing*.

Cheng KKF, Molassiotis A and Chang AM. (Accepted for Publication). Evaluation of an oral care protocol intervention in the prevention of chemotherapy-induced oral mucositis in paediatric cancer patients. *European Journal of Cancer*.

Chien WT. 2000, Use of Physical Restraints on Hospitalized Psychogeriatric Patients. *Journal of Psychosocial Nursing*, 38(2), 13-22.

Chien WT, Kam CW and Lee FK. (Accepted for Publications). An assessment of the patients' needs in mental health education. *Journal of Advanced Nursing*.

Holroyd E. (Accepted for Publication). Filipino domestic workers in Hong Kong: Health related behaviours, health locus of control and social support. *Women & Health*.

Holroyd E. (Accepted for Publication). Hong Kong Chinese daughters' caregiving obligations towards their elderly dependant parents: a cultural model approach. *Social Science & Medicine*.

Holroyd E. (Accepted for Publication). Hong Kong Chinese daughters' intergenerational caregiving obligations: a cultural model approach. *Social Science & Medicine*.

Hong Kong Centre

Dissemination

Holroyd E and Molassiotis A. 2000, Hong Kong Chinese perceptions of the experience of unrelated bone marrow donation. *Social Science & Medicine*, 51, 29-40.

Holroyd E, Twinn S and Shiu ATY. (Accepted for Publication). Evaluating Psychosocial Nursing Interventions for Cardiac Clients and Their Caregivers: A Case Study of the Community Rehabilitation Network in Hong Kong. *Journal of Advanced Nursing*.

Holroyd E, Twinn S and Shiu ATY. 2001, Chinese women's experiences and images of the pap smear experience. *Cancer Nursing*, 24(1), 68-75.

Ip WY. 2000, Chinese husbands' presence during labour: A preliminary study in Hong Kong. *International Journal of Nursing Practice*, 6(2), 89-96.

Ip WY. 2000, Relationship between partner's support during labour and maternal outcomes. *Journal of Clinical Nursing*, 9(2), 265-272.

Ip WY, Chau JPC, Chang AM and Lui HL. 2001, Knowledge of and Attitudes Toward Sex Among Chinese Adolescents. *Western Journal of Nursing Research*, 23(2), 211-222.

Lee TFD. (Accepted for Publication). Perceptions of Hong Kong Chinese elders on adjustment to residential care. *Journal of Interprofessional Care*.

Lee YMI, Chien WT and Mackenzie AE. 2000, Needs of families with a relative in a critical care unit in Hong Kong. *Journal of Clinical Nursing*, 9, 46-54.

Leung KK, Chien WT and Mackenzie AE. 2000, Needs of Chinese Families of Critically Ill Patients. *Western Journal of Nursing Research*, 22(7), 826-840.

Leung MY, Molassiotis A and Chau JPC. (Accepted for Publication). Coping and Adjustment in Chinese Patients with Chronic Obstructive Pulmonary Disease. *International Journal of Nursing Studies*.

Lui HL, Lee TFD and Mackenzie AE. 2000, Community Care of Older Chinese People in Hong Kong: a Selective Review. *Australasian Journal on Ageing*, 19(4), 180-184.

Molassiotis A, Callaghan P, Twinn S and Lam SW. 2001, Assessment of needs of adult symptomatic HIV patients in Hong Kong. *AIDS Care*, 13(2), 177-189.

Molassiotis A, Callaghan P, Twinn S and Lam SW. 2001, Correlates of quality of life in symptomatic HIV patients living in Hong Kong. *AIDS Care*, 13(3), 319-334.

Molassiotis A. and Chan CWH. (Accepted for Publication). Fatigue Patterns in Chinese patients receiving chemotherapy. *European Journal of Oncology Nursing*.

Hong Kong Centre

Dissemination

Molassiotis A. and Chan CWH. 2000, Fatigue patterns in Chinese patients receiving radiotherapy. *Recent Advances and Research Updates*, 1(2), 81-88.

Molassiotis A. and Chan CWH. 2000, The association of fatigue with febrile neutropenia in patients receiving radiotherapy. *European Journal of Oncology Nursing*, 4(4), 249-251.

Molassiotis A, Chan CWH, Yam B and Chan SJ. 2000, Quality of life in Chinese women with gynaecological cancers. *Supportive Care in Cancer*, 8(5), 414-422.

Molassiotis A, Chan CWH, Yam B, Chan SJ and Lam SW. (Accepted for Publication). Life after cancer: adaptation issues faced by Chinese gynaecological cancer survivors in Hong Kong. *Psycho-Oncology*.

Nahas V, Chang AM and Molassiotis A. 2001, Evidence-Based Practice: Guidelines for Managing Peripheral Intravascular Access Devices. *Journal of Nursing Administration*, 31(4), 164-165.

Ng DTF, Chan S and Mackenzie AE. 2000, Case Management in the Community Psychiatric Nursing Service in Hong Kong: Describing the Process. *Perspectives in Psychiatric Care*, 36(2), 59-66.

Pang SK, Ip WY and Chang AM. (Accepted for Publication). Psychosocial correlates of fluid compliance among Chinese hemodialysis patients. *Journal of Advanced Nursing*.

Rossiter JC and Yam B. 2000, Breastfeeding: How could it be enhanced? The perceptions of Vietnamese women in Sydney, Australia. *Journal of Midwifery & Women's Health*, 45(3), 271-276.

Shiu ATY. (Accepted for Publication). The threat of hypoglycaemia among Hong Kong Chinese patients: Implications for clinical nursing practice. *Journal of Clinical Nursing*.

Shiu ATY. 2001, The significance of empowerment for perceptions of control: a case study of a home for older people. *Journal of Clinical Nursing*, 10, 152-153.

Newsletter

Chow V, Chan A, Chan D, Chan E, Chu YW, Li C, Wong S, Chau J, and Chang A. 2001, Promoting Evidence Based Nursing Practice (EBNP) in PWH. PWH Newsletter, 2 April.

Hong Kong Centre

Dissemination

Conference Presentation

Chan CWH. 2000, Evidence-based practice in the management of mucositis. Paper presented in the 2nd Hong Kong Nursing Symposium on Cancer Care 2000: Developments in Cancer Nursing. Hong Kong: Departments of Nursing & Clinical Oncology, The Chinese University of Hong Kong.

Chan CWH. 2000, Using diary to assess fatigue in Chinese cancer patients - a pilot study. Paper presented in the Cancer Related Anaemia and Fatigue program. United Kingdom: St George's Hospital.

Chan CWH and Molassiotis A. 2000, The experience and perceptions of fatigue in Chinese cancer patients. Paper presented in the 2nd Hong Kong Nursing Symposium on Cancer Care 2000: Developments in Cancer Nursing. Hong Kong: Departments of Nursing & Clinical Oncology, The Chinese University of Hong Kong.

Chan HY and Shiu ATY. 2000, The influence of body size on health perceptions: A qualitative study with Hong Kong Chinese girl aged 10 to 12 years old. Abstracts of Joint Annual Scientific Meeting 2000 for Paediatricians and Paediatric Nurses. Hong Kong: The Hong Kong Paediatric Society / Hong Kong Paediatric Nurses Association.

Chan HY and Shiu ATY. 2000, The role of parents in the development of healthy eating and regular exercise pattern: A qualitative study with Hong Kong Chinese girl aged 10 to 12 years old. Conference abstracts of the Third International Conference of the Global Network of Who Collaborating Centres for Nursing & Midwifery - Health For All: The New Agenda- Nursing and Midwifery's Contribution, Working with Children and Adolescents Track (p. 83). United Kingdom: The Global Network of Who Collaborating Centres for Nursing & Midwifery.

Chan S. 2000, An evaluation of the implementation of case management in the community psychiatric nursing service. Abstracts of the 26th International Conference of ANZCMHN: Mental Health Nurses for a Changing World, Not Just Surviving, Thriving (p. 33). Australia: Australian and New Zealand College of Mental Health Nurses Inc.

Chan S, Mackenzie AE and Jacobs P. 2001, Cost-effective analysis of case management versus a routine community psychiatric nursing service. Abstracts of International Council of Nurses ICN 22nd Quadrennial Congress - Nursing: A New Era for Action (C53-5, p. 269). Copenhagen, Denmark: International Council of Nurses / Danish Nurses' Organization.

Chang AM. 2001, Evidence for the Promotion of Health. Abstracts of the International Conference "Improving Life Through Health Promotion: Nurses Making a Difference" (p. 67). Chiang Mai, Thailand: Chiang Mai University Faculty of Nursing / University of Hawaii at Monoa School of Nursing and Dental Hygiene / University of Michigan at Ann Arbor School of Nursing / University of Western Sydney.

Chang AM and Mackenzie AE. 2000, Contributions and Challenges in Clinical Nursing Research. Paper presented in the Health Services Research Committee Symposium. Hong Kong: Hospital Authority.

Hong Kong Centre

Dissemination

Chang AM, Wootton Y and Ip WY. 2000, PCA versus traditional intramuscular injection in Chinese women undergoing elective gynaecological surgery. Abstracts of the Sixth Nursing Practice Conference - Nursing: Charting A New Course (p. 14). Adelaide, South Australia: Royal Adelaide Hospital / Adelaide University.

Chien WT and Kam CW. 2001, An Assessment of Needs of Outpatients with Schizophrenia for Mental Health Education. Abstracts of International Council of Nurses ICN 22nd Quadrennial Congress - Nursing: A New Era for Action (vol.1, C67-2, p.343). Copenhagen, Denmark: International Council of Nurses / Danish Nurses' Organization.

Holroyd E. 2000, Hong Kong Chinese daughters' caregiving obligations towards their elderly dependant parents: Implication for Community Nurses. Paper presented in the Sixth International Middle East Nursing Conference: Celebrating Success in the New Millennium: International Reflections on Nursing Heritage. Jordan: Jordan University of Science & Technology / University of Windsor/Canada.

Holroyd E. 2001, Bodily Order and Disorder and the Location of Chinese Caregiving Self: Towards A Theory. Paper presented at the 2nd Advances in Qualitative Methods Conference. Edmonton, Alberta, Canada: International Institute for Qualitative Methodology.

Ip WY, Chang AM and Wootton Y. 2001, Patient satisfaction with pain management. Paper presented at the 3rd Hong Kong Nursing Symposium on Cancer Care 2001 - Nurses' impact on cancer care: initiatives in clinical practice. Hong Kong: Department of Nursing, The Chinese University of Hong Kong / Department of Clinical Oncology, Prince of Wales Hospital.

Lee S and Nahas V. 2000, Waiting for a heart transplant: the lived experience of Hong Kong Chinese patients. Paper presented in the British Association of Critical Care Nurses International Global Connections Conference. Edinburgh, United Kingdom: Heriot-Watt University.

Lee TFD. 2000, Paper presented in the 2000 HA Shanghai Geriatric Scientific Forum. Shanghai, China: The Renji Hospital.

Levy V and Chan S. 2000, The qualitative experience of postnatal depression in Hong Kong Chinese women. Paper presented in the 13th Annual Nursing Conference. Hong Kong: College of Nursing.

Lopez V, Chang AM, Molassiotis A, Chan D and Tong D. 2001, Nursing management of peripheral intravascular access devices: an intervention study. Abstracts of Merging Tradition, Intuition, Empirics And Innovation - An International Conference On Health Sciences Education And Practice (p. 23). Hong Kong: Department of Nursing and Health Sciences, The Hong Kong Polytechnic University.

Lui HL and Mackenzie AE. 2001, Promoting the health of elderly family carers in Hong Kong. Paper presented at the Healthy Ageing Convention. Hong Kong: The Elderly Commission.

Hong Kong Centre

Dissemination

Molassiotis A, Callaghan P, Twinn S and Lam C. 2000, The effects of cognitive-behavioural group therapy and peer support/counselling in decreasing psychological distress and improving quality of life in Chinese symptomatic HIV patients. Paper presented at the XIII International AIDS Conference. Durban, South Africa: International AIDS Society.

Nahas V. 2000, Nursing management of peripheral intravascular access devices. Abstracts of the 20th Anniversary of the Aga Khan University School of Nursing International Conference: Regional collaboration in nursing education, practice and research (p. 25). Karachi, Pakistan: Aga Khan University School of Nursing.

Shiu ATY. 2000, An Application of the Worry Scale to a Sample of Hong Kong Chinese People. Abstracts of the 2nd HK Diabetes & Cardiovascular Risk Factors: East Meets West Symposium (p. 43). Hong Kong: Department of Medicine & Therapeutics, The Chinese University of Hong Kong / The Hong Kong Foundation for Research and Development in Diabetes.

Shiu ATY. 2001, The cross cultural applicability of the construct of sense of coherence for stress perceptions among two samples of Hong Kong Chinese adults. Abstracts of Triennial International Nursing Research Conference (p. 35). Scotland, UK: Royal College of Nursing of the United Kingdom Research Society.

Shiu ATY, Twinn S and Holroyd E. 2000, Hong Kong Chinese women's satisfaction with screening for cervical cancer: factors influencing regular uptake of services. Conference abstracts of the Third International Conference of the Global Network of Who Collaborating Centres for Nursing & Midwifery - Health For All: The New Agenda-Nursing and Midwifery's Contribution. United Kingdom: The Global Network of Who Collaborating Centres for Nursing & Midwifery.

Shiu ATY and Wong RYM. 2001, Translation of diabetes empowerment scale for use among Hong Kong Chinese: An application of Bradley's model. Poster presented at the International Council of Nurses ICN 22nd Quadrennial Congress - Nursing: A New Era for Action. Copenhagen, Denmark: International Council of Nurses / Danish Nurses' Organization.

Tribe R and Morrissey J. 2000, Explanatory cultural health beliefs and Psychology, how can they inform one another to provide bridges linking people across the millennia? Paper presented at the XVth Congress of the International Association for Cross-Cultural Psychology: Cultures and Psychology in 2000 Bridges Linking People Across the Millennia (p. 134). Pultusk, Poland: Institute of Psychology, Polish Academy of Sciences & Warsaw School of Advanced Social Psychology.

Tribe R and Morrissey J. 2001, Using interpreters within mental health. Poster presented at the VIth European Congress of Psychology. United Kingdom. 1-6 July.

Twinn S. 2000, Developing programmes for the prevention of cervical cancer amongst Hong Kong Chinese women: an evaluation of focus groups as a method of needs assessment. Paper presented in the Royal College of Nursing Research Society Annual Conference. England: University of Sheffield.

Hong Kong Centre

Dissemination

Twinn S. 2000, *The Psychosocial Needs of Patients during Rehabilitation: the Contribution of Nursing*. Paper presented at The Federation's Anniversary Scientific Meeting 2000. Hong Kong: The Federation of Medical Societies of Hong Kong.

Twinn S. 2001, *Methodological issues in multimethod research design: a case study of Hong Kong Chinese women's attendance patterns for cervical screening*. Abstracts of Triennial International Nursing Research Conference. Scotland, UK: Royal College of Nursing of the United Kingdom Research Society.

Twinn S and Holroyd E. 2001, *Women's perceptions of the factors influencing their screening behaviour for cervical cancer: implications for the development of clinical practice*. Abstracts of Merging Tradition, Intuition, Empirics And Innovation - An International Conference On Health Sciences Education And Practice (p. 36). Hong Kong: Department of Nursing and Health Sciences, The Hong Kong Polytechnic University.

Poster Presentations

Chan CWH, Chang AM, Lee I and Molassiotis A. 2001, *Oral mucositis in Chinese cancer patients undergoing chemotherapy*. Poster presented at the 3rd Hong Kong Nursing Symposium on Cancer Care 2001 - Nurses' impact on cancer care: initiatives in clinical practice. Hong Kong: Department of Nursing, The Chinese University of Hong Kong / Department of Clinical Oncology, Prince of Wales Hospital.

Chien WT and Leung KK. 2001, *Needs of Chinese Families of Critically Ill: Families & Nurses' perspectives*. Poster presented at the International Council of Nurses ICN 22nd Quadrennial Congress - Nursing: A New Era for Action. Copenhagen, Denmark: International Council of Nurses / Danish Nurses' Organization.

Holroyd E and Molassiotis A. 2001, *Hong Kong Chinese experiences of unrelated bone marrow donation: a qualitative account*. Poster presented at the 3rd Hong Kong Nursing Symposium on Cancer Care 2001 - Nurses' impact on cancer care: initiatives in clinical practice. Hong Kong: Department of Nursing, The Chinese University of Hong Kong / Department of Clinical Oncology, Prince of Wales Hospital.

Lam LW and Mackenzie AE. 2000, *Coping With A Child With Down Syndrome: The Experiences of Mothers in Hong Kong*. Poster presentation: Sixth Annual Conference: Qualitative Health Research (pp. 253-254). Canada: International Institute for Qualitative Methodology & University of Alberta.

Lee S and Lopez-Nahas V. 2001, *The lived experience of Chinese patients who are waiting for a heart transplant*. Poster presented at the International Council of Nurses ICN 22nd Quadrennial Congress - Nursing: A New Era for Action. Copenhagen, Denmark: International Council of Nurses / Danish Nurses' Organization.

Lee TFD and Mackenzie AE. 2001, *Chinese families' experiences with residential care placement of their elderly relatives*. Poster presented at the RGC June Visit. Hong Kong: The Chinese University of Hong Kong.

Hong Kong Centre

Dissemination

Lopez-Nahas V and Chang AM. 2001, Dissemination and implementation of Best Practice Information Sheet: A study of effectiveness of methods. Poster presented at the International Council of Nurses ICN 22nd Quadrennial Congress - Nursing: A New Era for Action. Copenhagen, Denmark: International Council of Nurses / Danish Nurses' Organization.

Molassiotis A, Yam B and Chan F. 2000, The Effectiveness of Progressive Muscle Relaxation Training and Guided Imagery in Managing Chemotherapy Induced Nausea and Vomiting among Breast Cancer Patients in Hong Kong. Poster presented in the 2nd Hong Kong Nursing Symposium on Cancer Care 2000: Developments in Cancer Nursing. Hong Kong: Departments of Nursing & Clinical Oncology, The Chinese University of Hong Kong.

Shiu ATY. 2001, Factors influencing Hong Kong Chinese women's decision to return for cervical cancer screening: a qualitative perspective. Poster presented at the Royal College of Nursing Joint Cancer Forums Conference - A Journey through cancer: nurses collaborate. UK: Royal College of Nursing. 28-30 June.

Twinn S. 2001, Screening for cervical cancer: the contribution of nursing. Poster presented at the 3rd Hong Kong Nursing Symposium on Cancer Care 2001 - Nurses' impact on cancer care: initiatives in clinical practice. Hong Kong: Department of Nursing, The Chinese University of Hong Kong / Department of Clinical Oncology, Prince of Wales Hospital.

Yam B and Cheung K. 2001, Palliative care nursing in a curative environment: experiences of neonatal intensive care nurses in Hong Kong. Poster presented at the 3rd Hong Kong Nursing Symposium on Cancer Care 2001 - Nurses' impact on cancer care: initiatives in clinical practice. Hong Kong: Department of Nursing, The Chinese University of Hong Kong / Department of Clinical Oncology, Prince of Wales Hospital.

Centre Promotion and Exhibits

Posters Display: 3rd Hong Kong Nursing Symposium on Cancer Care 2001, "Nurses' impact on cancer care: initiatives in clinical practice", 16-17 March 2001.

Posters Display: Department of Nursing, CUHK 10th Anniversary Celebration Ceremony, 12 January 2001.

Hong Kong Centre

Implementation

Implementation

These activities are focused on collaboration with our partner hospital, Prince of Wales Hospital (PWH)

Prevention and Management of Pressure Sores

A series of seminars have been organized to staff working in the Intensive Care, Medicine and Therapeutics, Oncology, Surgical as well as Orthopedic and Traumatic Departments regarding strategies used in the implementation of best practice in the prevention and management of pressure sores. Both the pre-implementation audit on current practice on the prevention and management of pressure sores, and the post implementation audit (after the introduction of the evidence based practice protocol designed by the workgroup in pilot wards) have been completed. The workgroup has planned to roll out the plan of this evidence based practice protocol to all surgical, medical, orthopedic, oncology wards and intensive care unit in June 2001. Disseminating strategies include identifying department and ward coordinators to disseminate the information to all staff as well as education. Audit on compliance will be carried out every three months. Incidence of hospital acquired pressure ulcers will be recorded and analyzed to guide practice.

Vital Signs

The pre and post implementation audits of the current practice of blood pressure measurement have also been completed. The evidence based practice vital signs protocol has been disseminated to all wards in the Medicine and Therapeutics, Paediatrics and Obstetrics & Gynecology Departments.

Management of Short Term Indwelling Urinary Catheters

This workgroup is at final stage of drafting the protocol for implementation. The Departments of Medicine & Therapeutics, Surgery, Oncology, Obstetrics & Gynecology as well as Orthopedics & Traumatology will be involved in the pilot project for evaluating the implementation of the evidence based practice protocol.

Tracheal Suctioning

Staff from the Infection Control Unit of PWH are part of a workgroup involved in designing the evidence based nursing protocol for Tracheal Suctioning for adults with artificial airway.

Evaluation of Dissemination and Implementation Strategies

The evidence based practice subcommittee planned to conduct a survey to identify topics for systematic review. The survey also intended to examine staff perception of the usefulness of the *Best Practice* Information Sheets and evidence based practice protocols.

Hong Kong Centre

Implementation

Workshops/Courses

Dissemination Seminars for Nursing Staff at partner hospital (PWH) on Implementing *Best Practice* in the Prevention of Pressure Sore (62 attendants) 13 - 14 June 2000.

Seminar on Implementing *Best Practice* in the Management of Peripheral Intravascular Devices for nurses in Hong Kong (47 attendants) 17 June 2000.

Workshops on Evidence Based Nursing Practice organized by Hospital Authority and Faculty of Medicine, CUHK (100 attendants) 4 - 9 September 2000.

Dissemination Seminar for Nursing Staff at partner hospital (PWH) on Implementing *Best Practice* in the Prevention and Management of Pressure Sore (49 attendants) 15 - 16 November 2000.

Seminar on Application of Psychotherapeutic Interventions to the Care of Depressed Clients (72 attendants) 2 December 2000.

New South Wales Centre

61

The New South Wales Centre for Evidence Based Nursing and Midwifery

University of Western Sydney Macarthur and South Western Sydney Area
Health Service

Staff

Director

Professor Rhonda Griffiths

Deputy Directors

Ms Ritin Fernandez

Professor Maree Johnson

Core Team/Management Committee

Ms Sushila Agnihotri

Mr Soufianne Boufous

Dr Josephine Chow

Professor John Daly

Ms Venita Devi

Ms Elizabeth Halcomb

Ms Rachel Langdon

Ms Jenny Morris

Ms Penelope Murie

Ms Cheryl Ussia

New South Wales Centre

Advisory Committee

Ms Rosemary Chester

Dr Jane Cioffi

Ms Jan Dent

Ms Donna Lennon

Ms Jennie West

Ms Debbie Young

Advisory Panel

Ms Jennie West, Hunter Area Health Service

Dr Jane Cioffi, University of Western Sydney

Ms Rosemary Chester, South West Sydney Area Health Service

Ms Jan Dent, Nurses Registration Board of NSW

Ms Donna Lennon, Greater Murray Health Service

Ms Debbie Young, North Eastern Area Health Service

Management Committee

Professor John Daly, University of Western Sydney

Ms Jenny Morris, South Western Sydney Area Health Service

Dr Josephine Chow, Liverpool Health Service

Ms Sandy Eagar, Macarthur Health Service

New South Wales Centre

Significant Events

The New South Wales Centre announced its arrival with a colloquium and official launch on 30 March 2001. Around 150 people attended the colloquium, with Adjunct Professor Joan Englert AM launching the Centre in the afternoon.

Advisory and Management Committees have been established and the first joint meeting was held on 28 May.

The South Western Sydney Area Health Service has provided funding to second two clinicians to the Centre this year. One RN has commenced a secondment and an allied health clinician will be appointed.

New South Wales Centre

Research

Research

Systematic Reviews

The Efficacy of Patient Isolation for the Control of Nosocomial MRSA in Acute Hospitals

Identification of Staphylococcal Aureus Reservoirs in the Acute Hospital Setting

The Infection Control Management of MRSA within the Acute Care Hospital

The Effectiveness of Solutions, Techniques and Pressure in Wound Cleansing

Research Projects

A double blind randomised control trial was completed comparing the healing and infection rates for wounds irrigated with tap water with wounds irrigated with normal saline. The paper is nearing completion.

Dissemination

Conferences/Presentations

Fernandez R, Griffiths R and Ussia C. 2000, Wound Cleansing. Which Solution? What Technique? First World Wound Healing Congress. Melbourne.

Griffiths R. 2000, Using patient priorities to assess quality of life. International Diabetes Federation Congress. Mexico City.

Griffiths R. 2000, Facts need not spoil a good story. Mental Health Nurses Conference.

Griffiths R. 2000, Research and Practice: The perfect match. Baptist Community Services NSW. Conference Keynote Address.

Griffiths R. 2000, GRIP: The Challenge for Nurses. Getting Research into Practice. Vascular Nurses Interest Group of NSW. Conference Key Note Address.

Fernandez R, Griffiths R. 2000, Use of evidence in palliative care. NSW Palliative Care Nursing Conference.

New South Wales Centre

Implementation

Implementation

Workshops/Courses

During 2000 three research methods workshops of 3 days duration were held to prepare South Western Sydney Area Health Service (SWSAHS) clinicians to function as reviewers for the systematic reviews.

Members from the Centre also spoke at a range of professional development sessions across the health service, addressing various topics relating to evidence based research.

New Zealand Centre

67

Centre for Evidence Based Nursing - Aotearoa

Auckland District Health Board

Staff

Director (until November 2000)

Mr John McArthur

Director (Acting) (from November 2000)

Ms Catherine Tracy

Core Team/Management Committee

Ms Heather Baker

Ms Jane Brosnahan

Ms Jackie Chapman

Mrs Sidney Cuthbertson

Mrs Samantha Heath

Mr Andrew Jull

Ms Maria Matthews

Ms Anne McKillop

Ms Ann O'Loughlin

Ms Lesley Powell

Changes

In April 2001 the collaborating Centre in New Zealand became "Centre for Evidence Based Nursing - Aotearoa". This was the result of changes in the partnership team for the Centre. Auckland University of Technology (AUT) discontinued their involvement and the Auckland District Health Board reconfirmed their commitment to the Centre. As a consequence of these changes a number of staff from University of Auckland have returned to the New Zealand Centre.

New Zealand Centre

Significant Events

Andrew Jull has been appointed an Associate Editor with Evidence Based Nursing and will participate in one of the Evidence Based Nursing courses at McMaster University as a trainee tutor in June. He will also gather information on problem-based learning, research into nurse practitioners, and visiting research centres at McMaster University.

The Joanna Briggs Institute 3rd Australasian colloquium is planned for 4 - 5 March 2002 with workshops on the preceding day. The venue is the Centra Hotel in the heart of Auckland's CBD.

Notable Visitors

Associate Professor Donna Ciliska, McMaster University, Canada.

Donna visited the Centre in New Zealand in August 2000, following her visit to Australia. The Centre ran a seminar in association with the New Zealand Guidelines Group called "Teaching and Learning Evidence Based Healthcare" which was attended by 100 delegates from throughout New Zealand. Donna also met with Centre staff during her brief visit, and has provided us with a copy of the workshop "How to Teach Evidence-based Nursing". Donna may visit New Zealand again on sabbatical.

Mr Khoon Kiat Tan, Alexandra Hospital, Singapore.

Khoon Kiat had a six week (18/9/00-27/10/00) attachment to the Centre in New Zealand and to Auckland Healthcare looking at Evidence Based Nursing and Quality Management processes. Khoon Kiat returns to a new role in Singapore with the Ministry of Health, focusing on evidence based health care. Following Khoon Kiat's visit, a group of senior nurses from Singapore also visited, they included Mrs Guek Choo Han, Chief Nursing Officer and Registrar, Singapore Nursing Board; Ms Juag Fong Boon, Executive Secretary, Singapore Nursing Board; Ms Yee Kew Lee, Director of Nursing, National University Hospital; Ms Yoke Lan Lee, Director of Nursing, KK Women's and Children's Hospital.

Karen Jones, Senior Public Health Specialist, Newcastle & North Tyneside Health Authority visited University of Auckland and the Centre in New Zealand in December 2000. She gave presentations on "Clinical Governance and Evidence Based Practice- Why do we need critical appraisal skills?" and "Clinical Governance and Evidence Based Practice" to both the Centre members and all of Auckland Healthcare.

Research

Systematic Reviews

Suctioning Patients with an Artificial Airway

A Systematic Review - No. 9

ISBN: 0 9577796-5-8

Lorraine Thompson

Instillation of 0.9% Sodium Chloride into an Artificial Airway

This review is in progress.

Evaluation Cycles

Best Practice in the Management of Tracheal Suctioning of Adults with an Artificial Airway

Research Projects

Andrew Jull and team have completed an evidence-based national clinical practice guideline on chronic leg ulcers. The Centre in New Zealand will fund the printing of the guideline in its complete form, it has already been disseminated in a summary form to General Practitioners, Practice Nurses and District Nurses. The Centre will also provide further funding to support completion of the Economic Model for Management of Venous Leg Ulcers.

Subject to funding grants, a consumer information adjunct to the leg ulcer guideline will be developed.

Tracy C. Supporting clinical decision making: Eliminating unnecessary specimen collection and subsequent cost.

New Zealand Centre

Dissemination

Dissemination

Publications

Brosnahan J, McArthur J, Tracy C. 2000, Canadian leader in evidence based healthcare visits New Zealand. *Te Puawha*, December.

Cuthbertson S. 2000, Nursing care for raised intra-abdominal pressure and abdominal decompression in the critically ill. *Intensive and Critical Care Nursing*, 16 (3), 175-180.

Cuthbertson, S., Margetts, M., & Streat, S, 2000, Bereavement follow-up after critical illness. *Critical Care Medicine*, 28 (4), 1196-1201.

JBIEBNM, 2000 Suctioning Adults with an Artificial Airway, *Best Practice* Vol 4 Iss 4. Blackwell Science-Asia, Australia.

Jull, A. Commentry on Beattie, AH, Prach At, Baxter, JP et al. 2001, A randomised controlled trial evaluating the use of enteral nutritional supplements postoperatively in malnourished surgical patients. *Gut* 2000: 46: 813-818. *In Evidence Based Nursing*: 4 (1): 22.

Jull A, Arroll B, Waters J. 2001, Care of people with chronic venous ulcers: An evidence based guideline. *New Zealand Family Physician*; 28, 15-17.

Jull AB, Waters J, Arroll B. 2000, A meta-analysis of pentoxifylline as a treatment for venous leg ulcers. *Journal of Tissue Viability*, 10(4): 161.

Jull AB, Waters J, Arroll B. (Accepted for Publication). A meta-analysis of pentoxifylline as a treatment for venous leg ulcers. In: The Cochrane Library, Issue 2. Oxford: Update Software. Commentary by WB Hillegrass. *ACP Journal Club*.

Jull AB, Waters J, Arroll B, Latta A, Bouchier R, Walker N, Oliver F, Milne R, Gelber P, Tuuta N. 2000, Guidelines for management of people with chronic leg ulcers. Centre for Evidence Based Nursing - Aotearoa, Auckland.

Thompson, L. 2000, Suctioning Adults with an Artificial Airway: *A Systematic Review* No 9. The Joanna Briggs Institute for Evidence Based Nursing and Midwifery, Adelaide.

Conferences/Presentations

Baker H and McKillop A. 2000, JBIEBN New Zealand: Supporting a Culture of EBP in Nursing, Teaching and Learning Evidence Based Healthcare, Bruce Mason Centre, Takapuna, Auckland, 17 August.

Brosnahan J. 2000, Management of Discharge is a Demand Driven Acute Service, Sixth Nursing Practice Conference, Stamford Grand Hotel, Adelaide, Australia, November 2000.

Brosnahan J, McArthur J, Tracy C. 2000, Canadian Leader in Evidence Based Healthcare Visits New Zealand. Te Puawha, December.

Brosnahan J. 2001, Integrating Intravenous Policy and Practice: A Process of Rationalisation. Intravenous Nursing Conference, Nelson NZ, March.

Cuthbertson S. 2000, Effective High Dependency Care Can be Provided in the Wards, Australian and New Zealand Scientific Meeting on Intensive Care, October.

Cuthbertson S. 2001, Should Intensive Care Nurses Embrace Extended Roles? NZ Scientific Meeting on Intensive Care. Auckland, New Zealand, March.

Jull A. 2000, A meta-analysis of pentoxifylline for treatment of venous leg ulcers. First World Wound Healing Congress, Melbourne, Australia, 10-13 September.

Jull A. 2001, Evidence for Clinical Pathways, Seminar on Evidence Based Practice, Waikato Hospital, Hamilton, New Zealand, February.

Jull A. 2001, Evaluating Randomised Controlled Trials, Workshop, NZNO Research Section Conference, Hamilton, New Zealand, 15 March.

Jull A. 2001, Evaluating Research Synthesis, Workshop, NZNO Research Section Conference, Hamilton, New Zealand, March.

McArthur J. 2000, The New Zealand Guidelines Group: People & Processes, Teaching and Learning Evidence-based Healthcare Seminar. Takapuna, Auckland, 17 August.

Tracy C. 2000, Supporting clinical decision making: Eliminating unnecessary urine cultures to reduce costs, Sixth Nursing Practice Conference, Stamford Grand Hotel, Adelaide, Australia, November.

New Zealand Centre

Dissemination

Tracy C. 2001, Supporting clinical decision making: Eliminating unnecessary specimen collection and subsequent cost. Nursing Research Section, New Zealand Nurses Organisation Conference- Advancing Nursing through Research, Bryant Education Centre, Waikato Hospital, Hamilton, New Zealand, March.

Tracy C. 2001, Supporting clinical decision making: Eliminating unnecessary specimen collection and subsequent costs. Conference Proceedings, New Zealand Nurses Organisation, Research Conference.

New Zealand Centre Implementation

Implementation

Andrew Jull is leading a paper in Evidence Based Nursing at the University of Auckland Division of Nursing. The paper is compulsory for all postgraduate nursing students and is taught using a workshop approach. The content covers searching skills, critical appraisal of randomised controlled trials (RCTs), systematic reviews of RCTs, qualitative evidence and studies of case-finding/diagnostic tests, and application of evidence to decision-making. Andrew has previously run this course twice within Auckland Healthcare for senior nurses not currently undertaking postgraduate studies.

Workshops/Courses

Workshops for the Centre have been reviewed by the Core Team, and advanced workshops are now being offered. Workshops include two consecutive workshops of one day each on "Evaluating randomised controlled trials as evidence" and "Implementing evidence into practice" in April, May, September and December.

Northern Territory Centre

The Northern Territory Centre for Evidence Based
Nursing and Midwifery

Northern Territory University

Staff

Director

Professor Jennifer Watson

Deputy Director

Ms Beryl McEwan

Core Team/Management Committee

Ms Helen Baldwin

Ms Maureen Britten

Ms Kath Charlwood

Ms Clare Fenwick

Ms Denby Kitchener

Ms Annie Mills

Professor Kay Roberts

Ms Sharon Sykes

Ms Bev Turnbull

Ms Karen Were

Advisory Panel

Ms Dana Dabrowska

Mr John Heslop

Ms Gabrielle Hickey

Ms Marie Hughes

Ms Melanie Van Haaren

Ms Virginia Martin

Mr Ged Williams

Changes

Ms Anne-Marie Dawson (CCNR/CNC 2B RDH Darwin)

Ms Jutta Edler (CCNR/RDH)

Northern Territory Centre

Significant Events

Conference: Continuum of Care: Across the health terrain 'from the bush to the big smoke' convened in Darwin 8-11 August 2000 was well attended. The Northern Territory Centre for Evidence Based Nursing and Midwifery hosted an evidence based nursing and midwifery workshop prior to the Conference. This was also well attended.

Research

Systematic Reviews

Acute Pain Assessment in Adult Patients (over 12 years) Experiencing an Episode of Acute Pain

Research Team: Professor Jenny Watson, Ms Annie Mills

The aim of this project is to conduct a systematic review of published literature and other existing reports and documents on acute pain assessment. The review will then be used to develop best practice protocols to enhance the assessment of acute pain and ensure appropriate pain management and outcomes.

A search strategy has been developed along with criteria to assess quality of the methodology and statistical analysis. A national review panel has been established to review the search protocol, provide advice and critique drafts. Two reviewers will review each included article, based on the prepared criteria, with a third reviewer available in the case of disputes. A final systematic review document will be drafted and by the national review panel prior to finalisation. A summary will be developed into a *Best Practice* Information Sheet.

The Management of Post Partum Haemorrhage for the Prevention of Primary Post Partum Haemorrhage

Research Team: Professor Jenny Watson, Ms Beryl McEwan (RDH), Ms Jessica May, Ms Annie Mills

The aim of this project is to conduct a systematic review of published literature and other existing reports and documents on post partum haemorrhage. The review will then be used to develop best practice protocols to reduce the risk of post partum haemorrhage in the third stage of labour during child birth.

A search strategy has been developed along with criteria to assess the quality of the methodology and statistical analysis. A national review panel has been established to review the search protocol, provide advice and critique drafts. Two reviewers will review each included article, based on the prepared criteria, with a third reviewer available in the case of disputes. A final systematic review document will be drafted and reviewed by the national review panel prior to finalisation. A summary of the review will be developed into a *Best Practice* Information Sheet.

Northern Territory Centre

Research

Evaluation Cycles

Best Practice in the Management of Tracheal Suctioning of Adults with an Artificial Airway

Research Projects

Extended role of the Midwife (Professor Jennifer Watson)

Client attitudes to being terminally ill (Professor Kay Roberts)

Darwin parent's attitudes to Kangaroo Care (Professor Kay Roberts)

Nurse-Academics' Scholarly Productivity (Professor Kay Roberts)

Health Promoting Hospitals (Professor Jennifer Watson)

The Queensland rural and remote area nurses medication study (Professor Desley Hegney)

Pain assessment and management in children at Royal Darwin Hospital (Professor Jennifer Watson)

Student attitudes and perceptions relating to body image, eating and exercising (Professor Jennifer Watson)

Queensland Centre

The Queensland Centre for Evidence Based Nursing and Midwifery

Mater Misericordiae Health Services (Brisbane) Limited

Staff

Director

Dr Grace Croft

Deputy Director

Ms Irene Lake

Core Team/Management Committee

Ms Ann Mitchell

Ms Prabha Ramritu

Ms Jane Jacobs (until January 2001)

Advisory Panel

Mr Jim O'Dempsey, Chairman

Ms Kym Barry

Dr Debra Creedy

Dr Elizabeth Davies

Mr Brad Elms

Ms Elizabeth Emmanuel

Ms Marjorie Henderson

Ms Catherine James

Ms Deb Nizette

Ms Sue Norrie

Ms Yvonne Osborne

Ms Liz Rossmuller

Queensland Centre

Significant Events

The Clinical Advisory Forum met in November 2000 with representatives from hospitals, community health, domiciliary nursing present. The purpose of the meeting was to identify clinical issues requiring evidence as topics for future systematic review. A total of forty-seven possible topics were identified. Further consultation with clinicians suggested the management of central venous access devices (CAVD) as an area in which best practice information is needed. The entire list of topics identified by the group will be shared with universities in Queensland and the Queensland Nursing Council.

Meetings of the Advisory Committee were held on 6 December, 2000 and 9 May 2001. The Committee was advised of continued growth in individual and corporate membership in Queensland. As a result of Mayne Health national membership, ten additional health facilities in Queensland are now corporate members.

The Executive Director of Nursing at the Princess Alexandra Hospital was invited to address the Advisory Committee at its May meeting to discuss the plan for the establishment of a Queensland Health state-wide initiative in nursing research and evidence based practice. Her delegate, Dr Sarah Winch informed the committee that a proposal had been forwarded to Queensland Health at the request of the Director General. We anticipate receiving further information about this initiative.

Queensland Centre

Research

Research

Systematic Reviews

Following the recommendation of the Clinical Practice Forum that evidence to inform nursing practice in relation to Central Venous Access devices (CVAD), was needed, we investigated issues related to the management of CVADs through the conduct of focus groups with nurse clinicians and educators. Two major problems were identified: prevention of infection and prevention and management of obstruction. Discussions indicated that the problem of infection was being addressed by other groups, but that prevention and management of obstruction in CVADs was an area requiring evidence for practice. A search of the literature in preparation of a draft protocol for a systematic review on the topic of prevention and/or obstruction in CVADs is underway.

Evaluation Cycles

Best Practice in the Prevention and Management of Mucositis

Queensland Centre

Research

Current Projects

A Multidisciplinary Approach to Fatigue Management in Newly Diagnosed Cancer Patients. A Mitchell, C Bradbury, C Buttrum, V Corcoran, E Grafton, T Hall, A Hyatt, S McCray/K Plett, A O'Malia, M Tefay, S Tepes, T Wood.

Education Support for Carers (ACU/Mater Collaborative Project) D Prior, M Foster, A Mitchell, A O'Malia, C Boyd, S Miles.

Effective post discharge pain management for those having hip or knee surgery. A Mitchell, R Annand, V Caithness, T Hall, F Crittenden.

Nurses experience of Vancomycin Resistant Enterococcus (VRE) A Mitchell, T Cummins, N Spearing, J Adams, L Gilroy.

Pre-operative anxiety in day surgery and the use of music therapy. J Esposito. (Mentoring Project)

Promoting *Best Practice* in the Prevention and Management of Oral Mucositis. A Pearson, R Wiechula, A Mitchell. (multi-site project)

Parental and family participation in care during hospitalisation C Keyte, P Ramritu, J Hudson-Collins and C Sparks.

Pain and vomiting in children having tonsillectomy and adeno-tonsillectomy P Denton, Z Gilbride (mentored project)

Identification of strategies to optimise nursing care to adolescents with mental health problems P Ramritu, T Stanley, M Courtney.

Pre-post implementation study into nurses' perceptions of a Clinical Information Systems program in PICU. L O' Maley.

Queensland Centre

Dissemination

Dissemination

Publications

Finlayson K, Sheehy J and Grosvenor L. 2000, Swallowing Problems - Information for Caregivers, Joanna Briggs Institute for Evidence Based Nursing and Midwifery.

Jacobs J, Soong B. (Accepted for Publication). Midwifery Management of the perineum in 2nd Stage Labour, *Birth Issues*

Keyte C, Ramritu P, Hudson-Collins J and Sparks C. 2001, Parents key role in child's hospital care, *Nursing Review*. April, p24.

Mitchell A, Cummins T, Adams J, Gilroy L and Spearing N. (Accepted for Publication). Nurses experience with Vancomycin-Resistant Enterococcus (VRE), *Journal of Clinical Nursing*.

Neill S and Ramritu P. 2000-2001, An international paediatric nursing research network. *Paediatric Nursing*. 12 (10), p8.

Ramritu P and Barnard A. 2001, New nurse graduates understanding of competence, *International Nursing Review* 48 (1), 47-57. Also published in Spanish version of Journal.

Ramritu P, Denton P, Gilbride Z. 2001, Pain and vomiting following tonsillectomy and adeno-tonsillectomy, *Nursing Review* April, p23.

Ramritu P, Finlayson K, Mitchell A and Croft G. 2001, Identification and nursing management of dysphagia in individuals with neurological impairment: a systematic review. *Database of Abstracts of Reviews of Effectiveness*, The University of York NHS Centre for Reviews and Dissemination. [Web Document].

Available: <http://nhscrd.york.ac.uk/online/dare/20008336.htm> [Available July 2001].

Ramritu P. 2000, Use of Oucher Numeric and Word Graphic Scale in children aged 9-14 years with post operative pain, *Journal of Clinical Nursing* 9 (5) 763-772.

Papers presented

Croft G and Edwards H. 2001, Steaming ahead with evidence based practice, Ausmed conference The times they are 'a changing, Brisbane, February.

Denton P, Gilbride Z and Ramritu P. 2001, Pain and vomiting in children following tonsillectomy and adeno-tonsillectomy. Queensland Nursing Council Research Grants Awards, Brisbane, March.

Queensland Centre

Dissemination

Mitchell A. 2000, Evidence based medical and surgical nursing practice: Keeping the process simple, Broadening our Boundaries: Excellence in Medical/Surgical Nursing Conference. Royal College of Nursing, Australia. Brisbane, 4-5 August.

Ramritu P. 2001, Role of the clinical setting in development of competence of new nurse graduate, at The dawn of a new era in children's health, conference hosted by the Australian and New Zealand Confederation of Child Health Nurses, Brisbane, Queensland, 24-26 May.

Posters presented

Mitchell A, Wood T, Grafton E. 2001, A Multidisciplinary approach to fatigue management in newly diagnosed cancer patients undergoing chemotherapy treatment, Health Outcomes Conference, Canberra, June.

Mitchell A, Wood T, Grafton E. 2000, A Multidisciplinary approach to fatigue management in newly diagnosed cancer patients undergoing chemotherapy treatment" Queensland Oncology Nurses Group conference, Cairns, July.

Centre Promotion and Exhibits

The Queensland Centre developed and manned a booth promoting the Joanna Briggs Institute at the Directors of Nursing Queensland (DoNA Inc.), annual conference August, 2000 Brisbane and at the "Celebration of Nursing" exhibition sponsored by the Institute of Practising Nurses, King George Square, Brisbane, 12 May 2001.

Queensland Centre

Implementation

Implementation

Workshops/Courses

K Finlayson, J Jacobs, A Mitchell and P Ramritu have developed a continuing education unit "Establishing Evidence in Nursing" in collaboration with Queensland Institute of Technology School of Nursing. This unit has subsequently been approved for post-graduate credit.

G Croft, Introduction to Evidence Based Nursing - to senior staff Redlands Hospital, November 2000.

G Croft, What's Happening in Evidence Based Nursing, to Directors of Nursing, Southern Zone, Queensland Health
11 May 2001

G Croft, Evidence Based Nursing, Rockhampton Health Services District, October 2000.

A Mitchell , Evidence Based Nursing, St Andrew's War Memorial Hospital, Brisbane, June 2001.

A Mitchell, Evidence Based Practice, MAH staff education program (ongoing)

P Ramritu , Evidence Based Practice, to clinical nursing staff, Mater Children's Hospital, June-December 2000.

Victorian Centre

The Victorian Centre for Evidence Based Nursing

The University of Melbourne

Staff

Director

Professor Judith Parker

Executive Director

Dr Tracey Bucknall

Associate Director

Associate Professor Linda Johnston

Core Team/Management Committee

Associate Professor Sanchia Aranda, Research Associate

Ms Robyn Faulkner, Research Fellow

Ms Donna Milne, Research Fellow

Ms Felicity Osmond, Research Assistant

Ms Alison Hutchinson, PhD Candidate

Ms Joan Ostaszkiwicz, Masters Candidate

Ms Alison Sidebotham, Administration Officer (until August 2000)

Ms Linda Devilee, Administration Officer (from September 2000 - February 2001)

Ms Stephanie White, Administration Officer (from May 2001)

Victorian Centre

Advisory Panel (Coordinating Council)

Dr Christine Beanland

Ms Elizabeth Eadie

Ms Jennifer Gale

Associate Professor Brenda Happell

Ms Fiona Hearn

Professor Megan-Jane Johnstone

Ms Jill Linklater

Ms Ella Lowe

Ms Faye Marles

Ms Maria Miller

Ms Belinda Moyes

Dr Jennifer Newton

Ms Suzanne Petterson

Ms Anne Marie Scully

Mrs Maria Stickland

Associate Professor Jill Teschendorff

Dr Sue Turale

Changes

Alison Sidebotham, Administrative Officer, resigned to take up a full time position in the Centre for Psychiatric Nursing Research and Practice and Linda Devilee was appointed as a replacement.

Felicity Osmond was appointed as research assistant to work on the breast care nurse workforce study and other projects.

Linda Johnston, Associate Director, was appointed Associate Professor in a joint position between the Royal Children's Hospital and the School of Postgraduate Nursing.

Victorian Centre

Significant Events

Professor Judith Parker's achievements in nursing education were recognised in the inaugural Victorian Honour Roll of Women, May 2001.

Associate Professor Sanchia Aranda was awarded the Oncology Nursing Society International Award for Contribution to Cancer Care in May 2001 at the Oncology Nursing Society Conference in San Diego.

Coordinating Council meeting 23 November 2000.

Executive Committee meeting 13 November 2000.

Notable Visitors

Professor Margaret Horsburgh from the University of Auckland visited the Centre on 15 March 2001.

Associate Professor MaryAlice Jordan-Marsh, RN, PhD, FAAN from the University of Southern California visited 3 March 2001.

Professor Brendan McCormack from the University of Ulster/Royal Group of Hospitals Trust presented a seminar on the creation of nursing development units in the UK on 20 February 2001.

Ms Catherine Tracy and Ms Jane Brosnahan from the New Zealand Centre for Evidence Based Nursing visited the Centre on 27-28 November 2000.

Professor Christine Moffat and Dr Peter Franks, Directors of The Centre for Research and Implementation of Clinical Practice (CRICP) London, visited the Centre and presented a seminar on 11 September 2000.

Associate Professor Donna Ciliska, co-Director of the Canadian Centre for Evidence Based Nursing, McMaster University, Canada, visited the Centre in August 2000.

Victorian Centre

Research

Research

Systematic Reviews

A Master of Nursing (Research) student commenced in March 2000. Joan Ostaszkievicz is undertaking the Systematic Review, 'Timed Voiding and Habit retraining', under the auspices of the Cochrane Incontinence Group, UK. Draft protocol submitted to the Review Group.

Systematic Review. The effectiveness of nursing led case management'. Cochrane Effective Practice and Organisation of Care Review Group (UK). Revised protocol accepted.

Systematic Review. Barriers to research utilisation by nurses'. Cochrane Effective Practice and Organisation of Care Review Group (UK). Protocol accepted.

A Master of Nursing (Research) scholarship for 2001 is currently being advertised. The research topic is "Acute confusion in the medically ill".

Ostaszkievicz J, Johnston L, Roe B. Timed voiding for the management of urinary incontinence in adults. [Protocol] Cochrane Incontinence Group.

Changing Practice Information Sheet

Getting Research into Practice and Implementing Clinical Practice Guidelines in progress.

Research Projects

'An evidence-based approach to nursing management of the breastfeeding infant with failure to thrive admitted to a paediatric hospital'. Supported by the School of Postgraduate Nursing-Victorian Centre for Nursing Practice Research Joint Initiative Grant and the Royal Children's Hospital Nursing Research Fund.

'Development and initial testing of a structured intervention to enhance the care of women with advanced breast cancer.' Research commissioned by the Inner and Eastern Healthcare Network Breast Services Enhancement Project Consortium.

Bucknall T, Johnston L, Milne D and Faulkner R. 2001, "An evaluation of the Clinical Research Fellowship Program in changing nursing practice." Funded by the Victorian Centre for Nursing Practice Research.

Victorian Centre

Research

Funding Applications

The VCNPR/VCEBN was successful in obtaining a SPIRT scholarship in collaboration with the Royal Children's Hospital. Alison Hutchinson has commenced a full time PhD on the project titled: "The role of the nurse in the development of evidence-based clinical pathways: the impact of interdisciplinary collaboration on health care."

Bucknall T, Walter J, Presneill J and Manias E. 2001, "Evaluating the effectiveness of protocol-directed sedation management with non protocol-directed sedation management on mechanically ventilated patients in an Australian Intensive Care Unit." Australian College of Critical Care Nurses' Abbott Research Grant (\$10,000).

Aranda S, Faulkner R, Scott C, Akers G, Cannon A, Voudouris N and Yates P. "Investigating the support and information needs of women with advanced breast cancer." Inner and Eastern Health Care Network Breast Care Consortium (\$50,000).

Johnston L, Aranda S, Bucknall T, Milne D, and Faulkner R. "Breast care nurses in Victoria: A workforce study of practice and factors influencing practice." Department of Human Services (\$49,100).

Johnston L, Wharrad H, Bucknall T, Cox K and Wright R. "Using the Internet for evidence based practice in nursing." Telematics Trust, Victoria (\$22,000).

Victorian Centre

Dissemination

Dissemination

Publications

The first of quarterly newsletters was produced and disseminated in September 2000. The newsletter aims to provide Victorian nurses with information on the Centre's activities, summaries of selected projects undertaken in the Clinical Research Fellowship program, citations of relevant research publications, conference announcements, as well as the activities of JBIEBNM and collaborating Centres.

Conferences/Presentations

Johnston L and Faulkner R. 2000, Evidence Based Practice and the Clinical Research Fellowship Program, Victoria University of Technology Staff Seminar, July.

Johnston L. 2000, Research in Clinical Practice. The St Vincents Hospital Research Week Nursing Workshop, August.

Johnston L. 2000, Making the invisible, visible. College of Nurses Aotearoa (NZ) Conference, September.

Bucknall T. 2000, What does evidence based practice mean for critical care nurses? Annual Scientific Meeting on Intensive Care Canberra, October.

Milne D. 2000, Why do you do it that way? The interface between evidence base nursing and clinical practice. Medical Imaging Nurses Association 8th State Conference, October.

Parker J. 2000, Evidence based practice – The Joanna Briggs Institute. Cabrini Research Day, November.

Dr Tracey Bucknall attended a five day workshop from 2-7 July at the Royal College of Nursing Institute, Oxford titled "Fostering an Organisational Culture of Practice Development: A Programme for Leaders of Nursing and Health Care". She also spent a week at the RCN Institute meeting with researchers involved in the implementation of evidence-based practice where collaborative research options were identified and discussed.

Bucknall T and Johnston L. 2001, Clinical Research Fellowships: An initiative for developing clinical nursing practice, Practice Makes Perfect Conference, Melbourne, Australia.

Bucknall T. 2001, Policy and Practice Issues in Clinical Effectiveness and the Use of Evidence. Invited Speaker, Practice Development Residential Workshop, Melbourne, Australia.

Tracey Bucknall was invited to attend an International Colloquium on knowledge/ research utilization in Edmonton Alberta Canada on 30 April and 1 May 2001. The meeting was organized by the Canadian Working Group on research utilization, now known as CCoRUS (Canadian Consortium of Research Utilization Studies) led by Carole Estabrooks, and the UK group led by Alison Kitson at the RCNI (PARIHS project).

Victorian Centre

Implementation

Implementation

Workshops/Courses

Clinical Research Fellowship Program – The CRFs are designed to support nurses based in clinical settings to identify, appraise and utilise research as an evidential base for daily nursing practice. Within their own work environment, Fellowship holders identify an area of practice, a procedure or policy that needs an evidential base. During 2000/2001 thirty nurses from nineteen clinical agencies completed the program.

A one-day workshop titled 'Evidence based practice: a workshop' was conducted on 17 November at Ballarat Health Services. Twenty-eight managers, educators and clinicians from rural Victoria attended.

Best Practice Information Sheets ('Vital Signs' and 'Group and Individual Therapy in the Treatment of Depression') continue to be utilised in the curriculum of the Postgraduate Diploma of Advanced Clinical Nursing.

Best Practice Information Sheets are utilised in the Continuing Education Program conducted at the Royal Children's Hospital.

Systematic Reviews produced by JBIEBNM are available from the Centre's resource library for the benefit of all members of the School of Postgraduate Nursing.

Western Australian Centre

93

The Western Australian Centre for Evidence Based Nursing and Midwifery

Curtin University of Technology and King Edward Memorial and Princess
Margaret Hospitals

Staff

Director

Professor Robin Watts

Deputy Director

Ms Jeanette Robertson

Core Team/Management Committee

Ms Ann Callaghan

Ms Robyn Collins

Ms Lorraine Shepherd

Western Australian Centre

Advisory Panel

Ms Ann Callaghan

Ms Elaine Daniels

Ms Bronwyn Davies

Mr Phillip Della

Ms Judith Finn

Mr Michael Finn

Ms W Gardiner

Ms Heather Gluyas

Ms Hannah Herod

Ms D Le Cornu

Dr Gavin Leslie

Ms Liz Manley

Dr Sue Nikoletti

Ms Annette O'Mahoney

Ms Jaynie Sands

Significant Events

Advisory Panel meeting 1 December 2000.

Management meetings - 12 July and 9 October 2000; 13 March and 15 May 2001.

Workshop - Generic Midwifery Manual

Craig Lockwood worked with a group of Western Australian midwives over a two day period (16-17 November) to draft a generic midwifery manual. King Edward Memorial Hospital is continuing work on identifying evidence for the midwifery manual.

Membership of the Western Australian Advisory Group - Commonwealth's Primary Health Care Research, Evaluation and Development Strategy.

The Director was invited to attend 2 meetings of this group and subsequently invited to attend the national meeting on 9 December in Canberra.

Western Australian Centre

Research

Research

Systematic Reviews

The Nursing Management of Fever in Children

A Systematic Review - No. 14

ISBN: 0 9578276 1 X

Robin Watts, Jeanette Robertson, Gail Thomas and Review Panel members

Pacifier Non-nutritive Sucking in Infancy and Early Childhood

The Nurses Network from the Child Health Research Institute is leading this review together with five sub panels of community nurses. The submission to the Nurses Memorial Trust Fund was successful with a grant of \$9,000 being approved. These funds will support a part-time project officer who has been seconded from Community Health. The Western Australian Centre staff are assisting with research advice and administrative support plus funding consumables. The literature search is well under way and quality assessment of relevant studies is about to commence.

Post-partum Bladder Management

Hypoglycaemia in Neonates

Mental Health

Evaluation Cycles

A protocol is currently being drafted to evaluate the effectiveness of the Nursing Management of Fever in Children *Best Practice* Information Sheet.

Research Projects

The Systematic Review of Infantile Colic highlighted the need for further primary research on the use of herbal teas as treatment for infantile colic and this opportunity is being pursued collaboratively by the Fremantle Health Service and the School of Nursing, Curtin University of Technology.

Dissemination

Best Practice Information Sheets

The Best Practice Information Sheet The Nursing Management of Fever in Children is under review.

Permission is being sought from the Cochrane Group to develop a *Best Practice* Information Sheet based on their Infantile Colic Review.

Conferences/Presentations

Workshop – Nuffield Centre, Oxford.

Three members of the core team, on the invitation of the Health Department of Western Australia, attended a two day workshop on 25-26 February, presented by the Director and another member of the Nuffield International Centre for Evidence Based Clinical Practice, Oxford.

Facilitating Change in the Clinical Setting, Seminar, The Chinese University, Hong Kong, 29 May 2001.

Western Australian Centre

Implementation

Implementation

Workshops/Courses

All corporate members were offered a one day workshop this year with the costs covered by membership fees and the Centre's funding grant from the WA Health Department. The major focus of the workshop is on assisting health services apply current evidence to practice i.e. review their policies and practices and revise if necessary. Each health service is asked to identify a topic that is of relevance to them. This topic is then researched by the Centre and the most current evidence identified. Following an introduction to evidence based practice, the current health services practices related to the topic are reviewed and needed changes identified and modified as necessary for the context of care. The workshop concludes with a discussion of implementation issues.

The offer of a workshop was immediately taken up by several health services in the far north of the State. Prior to conducting the workshops, the format was piloted in March for the Geraldton Health Service with the assistance of the Combined Universities Centre for Rural Health. The selected topic was intravenous therapy. Fifteen participants from both the regional and private hospitals attended. Evaluations were very positive. An impact evaluation is to be conducted in August to determine to what extent the planned modifications to the hospital procedure have been implemented.

The second workshop was conducted in Port Hedland (with a video link to Mount Newman) in early May on traumatic wound care. Twenty staff participated, drawn from both the hospital and the community nursing services. A third workshop will be held in Derby in early July. Although very resource intensive in terms of preparation, as each health service's workshop is individualised, the very positive response from rural participants makes this work worthwhile.

Two 'Reading Research' workshops were held in April and July for new Review Panels. Twenty two community nurses attended the first one prior to commencing the systematic review on non-nutritive sucking. Twelve midwives attended the second workshop.

Presentations introducing evidence based practice and systematic reviews to student nurses have continued with 1 to 2 sessions held each semester at Curtin and Edith Cowan Universities.

Aged Care Centre

Australian Centre for Evidence Based Residential Aged Care (ACEBRAC)

La Trobe University and Bundoora Extended Care Centre

Staff

Director

Professor Alan Pearson

Deputy Director

Professor Rhonda Nay

Core Team

Research Coordinator

Ms Susan Koch

Coordinator of Reviews

Miss Catherine Ward

Research Officers

Mr Matthew Lewis

Mr Anthony Lyons

Administrative Officer

Ms Ellersley Both

Aged Care Centre

Board of Management

Professor Alan Pearson, Director of the Centre, Head of School of Nursing, La Trobe University

Professor Rhonda Nay, The Professor of Gerontic Nursing, La Trobe University

Ms Mary Barry, Chief Executive Officer, Victorian Association of Health & Extended Care

Ms Rosemary Bryant, Executive Director, Royal College of Nursing Australia

Mr Ben Chodziesner, Carers Association of Victoria

Mr Mark Cormack, National Director, Australian Healthcare Association

Dr Michael Dorevitch, The Director, Centre of Applied Gerontology

Professor Stephen Duckett, The Dean, Faculty of Health Sciences, La Trobe University

Ms Mandy Heather, The Director, Bundoora Extended Care Centre

Ms Jill Iliffe, Federal Secretary, Australian Nursing Federation

Ms Meigan Lefebure, Industry Development Officer, Aged Care Association of Victoria

Ms Lynette Moore, Executive Director, Alzheimer's Association of Victoria

Mr Greg Mundy, President, Aged Care and Community Services Australia

Ms Anne Patterson, President, Geriacion

Ms Barbara Squires, President, Australian Association of Gerontology

Ms Jenny Theisinger, Director, Office of the Commissioner for Complaints

Significant Events

Opening of the Centre- February 2001.

Official Launch planned for early 2002.

Aged Care Centre

Research

Research

Systematic Reviews

The Effect of Documentation on Quality of Care in Residential Aged Care Facilities

Skills Mix in an Aged Care Facility

The Aspects of Mealtimes which Impact on the Satisfaction of Residents in Aged Care Settings

Oral Hygiene of Adults with Dementia in Residential Care Facilities

Do Kegel Exercises Reduce the Frequency of Urinary Incontinence in Older Asian Women?

In collaboration with Fudan University, Shanghai, China.

Effective Preventive Intervention on Pressure Sores for Paralytic Patients being Cared for at Home

In collaboration with Chiang Mai University, Thailand.

Research Projects

Healthy Ageing Project in collaboration with the City of Whittlesea

Aged Care Centre

Implementation

Implementation

Workshops

Pearson A. presented Improving life through health promotion, Nursing making a difference, Chiang Mai, Thailand, 29 January–2 February 2001.

Pearson A, Ward C & Lewis M. presented Systematic Review Workshop, La Trobe University, Bundoora, 1-4 May 2001. Included attendees from Myanmar, Thailand, Maldives.

Pearson A. presented Evidence Based Practice Workshop, Singapore, June 2001.

3 day Systematic Review Workshop, June 2001.

1 day Qualitative Analysis Workshop, June 2001.

Pearson A. Yangon, Myanmar.